

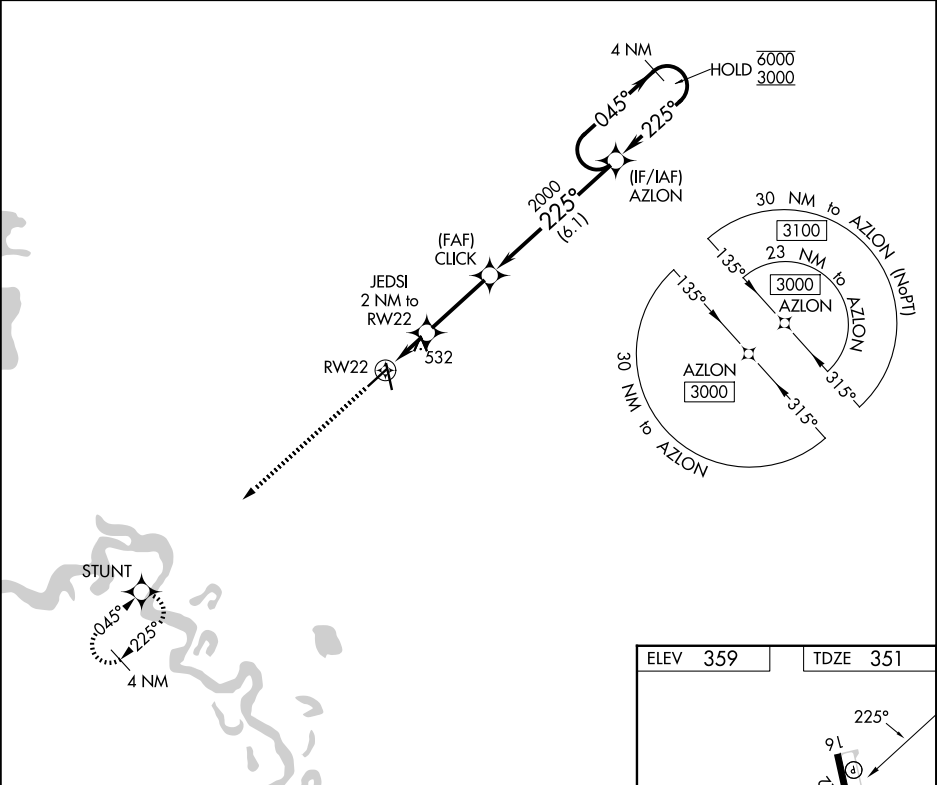
APP CRS	Rwy Ldg	4957
225°	TDZE	351
	Apt Elev	359

RNAV (GPS) RWY 22

HOPE MUNI (M18)

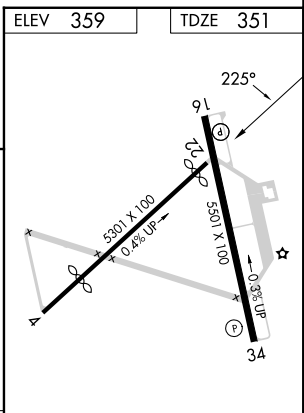
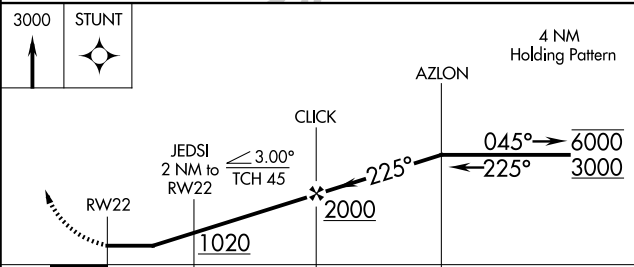
RNP APCH - GPS.	Procedure NA at night. Rwy 22 helicopter visibility reduction below 1 SM NA. Use Texarkana altimeter setting.	MISSED APPROACH: Climb to 3000 direct STUNT and hold.
-----------------	---------------------------------------------------------------------------------------------------------------------	-------------------------------------------------------

TXK ASOS 120.2	FORT WORTH CENTER 123.925 269.475	UNICOM 122.8 (CTAF) ①
--------------------------	---------------------------------------------	---------------------------------



SC-1, 16 APR 2026 to 14 MAY 2026

SC-1, 16 APR 2026 to 14 MAY 2026



CATEGORY	A	B	C	D
LNVA MDA	900-1	549 (600-1)	900-1½	549 (600-1½)
CIRCLING	900-1 541 (600-1)	940-1 581 (600-1)	940-1½ 581 (600-1½)	1100-2½ 741 (800-2½)

ELEV 359	TDZE 351
MIRL Rwy 16-34 ①	
REIL Rwy 16 and 34 ①	