

VORTAC TXK 116.3 Chan 110	APP CRS 052°	Rwy Ldg TDZE 4111 346 Apt Elev 359
---	------------------------	--

VOR RWY 4

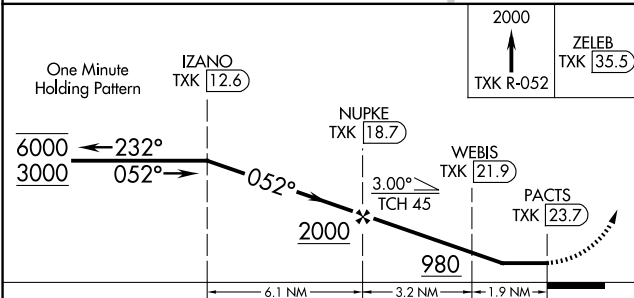
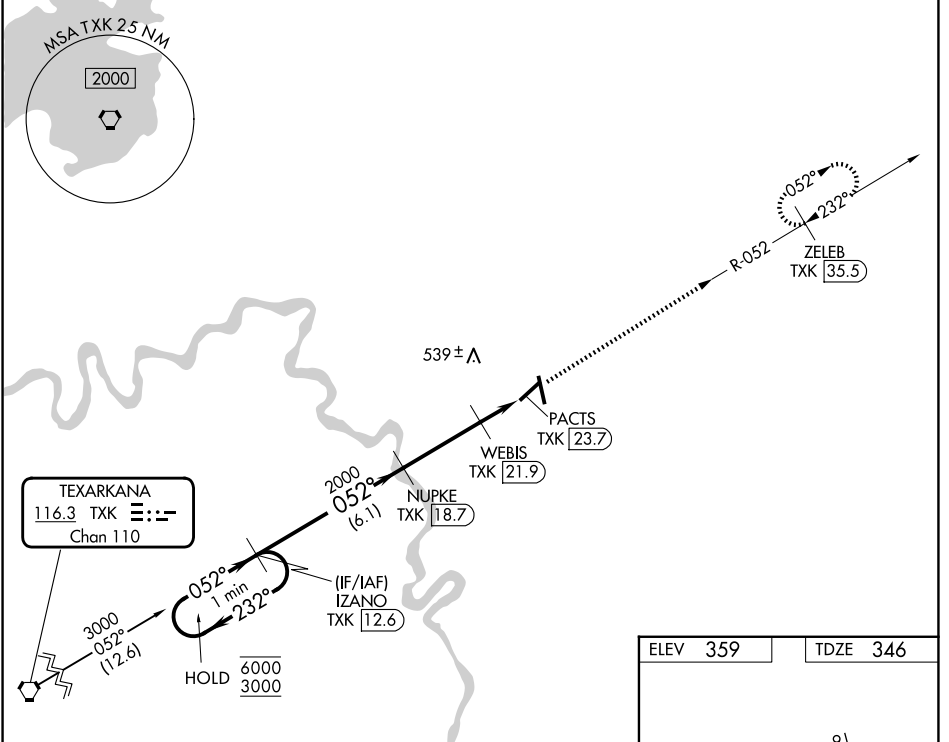
HOPE MUNI (M18)

DME required.

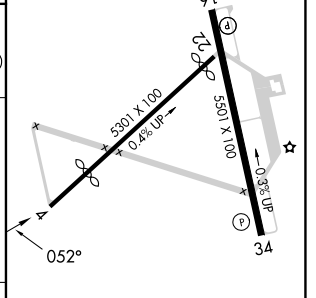
NA Procedure NA at night. Rwy 4 helicopter visibility reduction below 1 SM NA. Use Texarkana altimeter setting.

MISSED APPROACH: Climb to 2000 on TXK VORTAC R-052 to ZELEB/TXK 35.5 DME and hold.

TXK ASOS 120.2	FORT WORTH CENTER 123.925 269.475	UNICOM 122.8 (CTAF) 0
--------------------------	---	---------------------------------



ELEV 359	TDZE 346
----------	----------



CATEGORY	A	B	C	D
S-4	860-1	514 (600-1)	860-1 $\frac{3}{8}$	514 (600-1 $\frac{3}{8}$)
CIRCLING	860-1 501 (600-1)	940-1 581 (600-1)	940-1 $\frac{1}{2}$ 581 (600-1 $\frac{1}{2}$)	1100-2 $\frac{1}{2}$ 741 (800-2 $\frac{1}{2}$)

MIRL Rwy 16-34 0

REIL Rws 16 and 34 0

SC-1, 16 APR 2026 to 14 MAY 2026

SC-1, 16 APR 2026 to 14 MAY 2026