

# TERPZ EIGHT DEPARTURE (RNAV)

POTOMAC DEP CON  
125.525 291.625  
AWOS-3  
121.25  
UNICOM  
122.7 (CTAF)

RNAV 1 - DME/DME/IRU or GPS.

RADAR required.

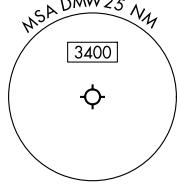
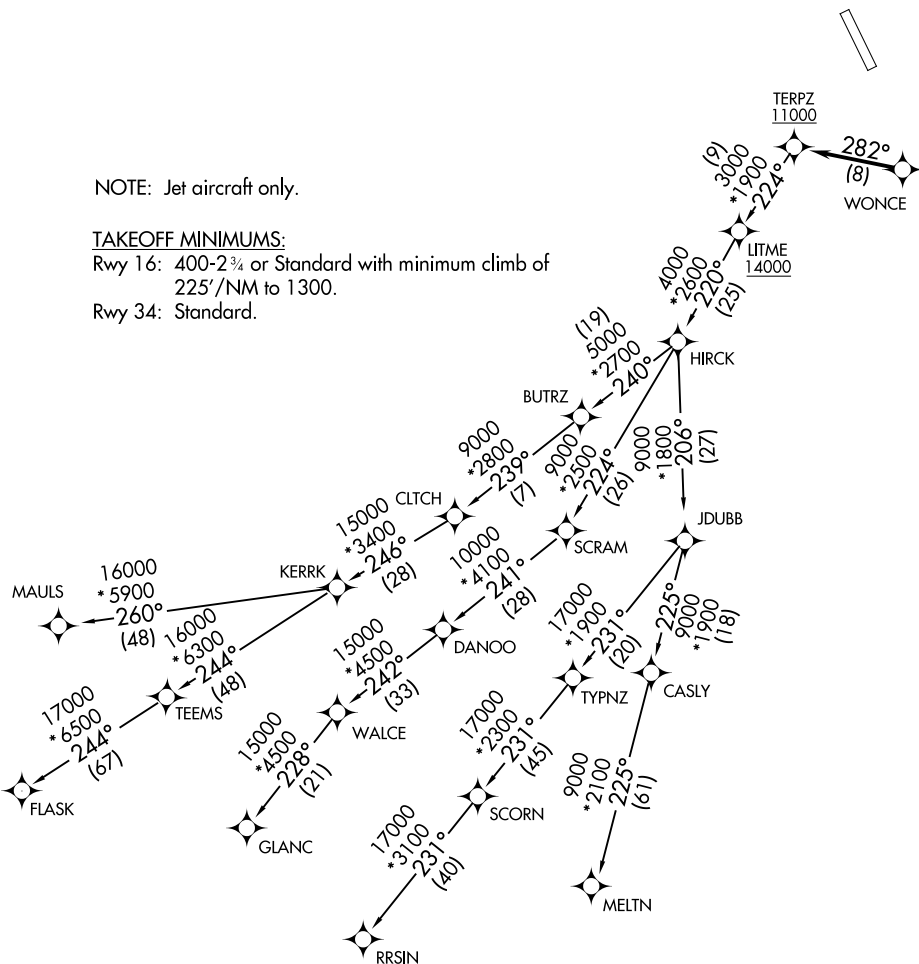
**TOP ALTITUDE:  
17000**

NOTE: Jet aircraft only.

TAKEOFF MINIMUMS:

Rwy 16: 400-2¾ or Standard with minimum climb of  
225'/NM to 1300.

Rwy 34: Standard.



NOTE: Chart not to scale.

NE-3, 16 APR 2026 to 14 MAY 2026

NE-3, 16 APR 2026 to 14 MAY 2026