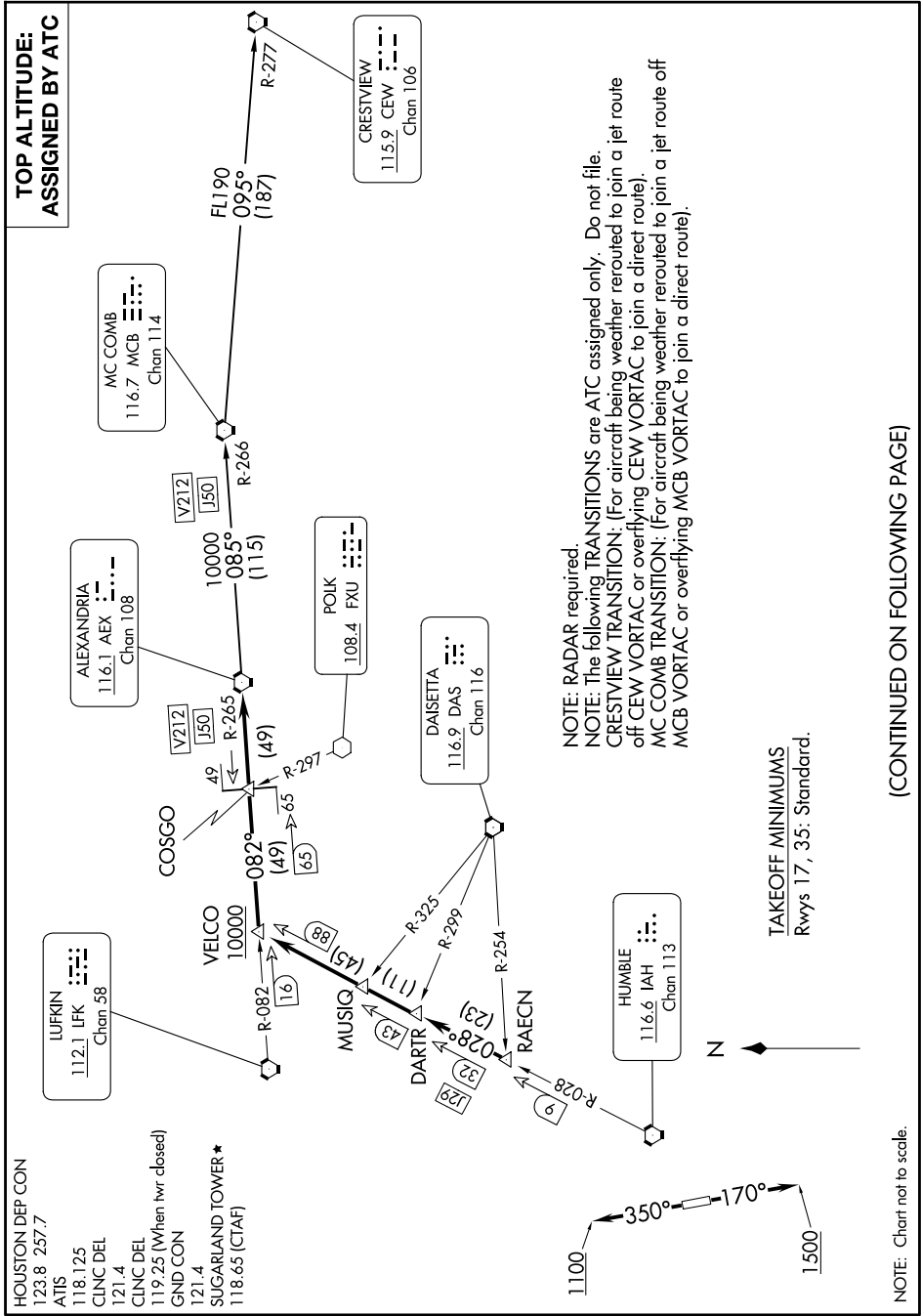


# ALEXANDRIA THREE DEPARTURE

SC-5, 16 APR 2026 to 14 MAY 2026



HOUSTON DEP CON  
123.8 257.7  
ATIS  
118.125  
CLNC DEL  
121.4  
CLNC DEL  
119.25 (When hwr closed)  
GND CON  
121.4  
SUGARLAND TOWER ★  
118.65 (CTAF)

**TOP ALTITUDE:  
ASSIGNED BY ATC**

NOTE: RADAR required.  
NOTE: The following TRANSITIONS are ATC assigned only. Do not file.  
CRESTVIEW TRANSITION: (For aircraft being weather rerouted to join a jet route off CEW VORTAC or overflying CEW VORTAC to join a direct route).  
MC COMB TRANSITION: (For aircraft being weather rerouted to join a jet route off MCB VORTAC or overflying MCB VORTAC to join a direct route).

(CONTINUED ON FOLLOWING PAGE)

SC-5, 16 APR 2026 to 14 MAY 2026

# ALEXANDRIA THREE DEPARTURE

NOTE: Chart not to scale.