

BORRN SIX DEPARTURE (RNAV)

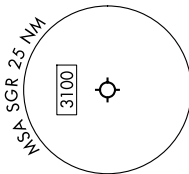
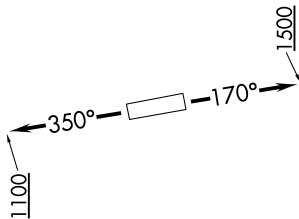
HOUSTON, TEXAS

**TOP ALTITUDE:
ASSIGNED BY ATC**

RNAV 1 - DME/DME/IRU or GPS.
RADAR required.

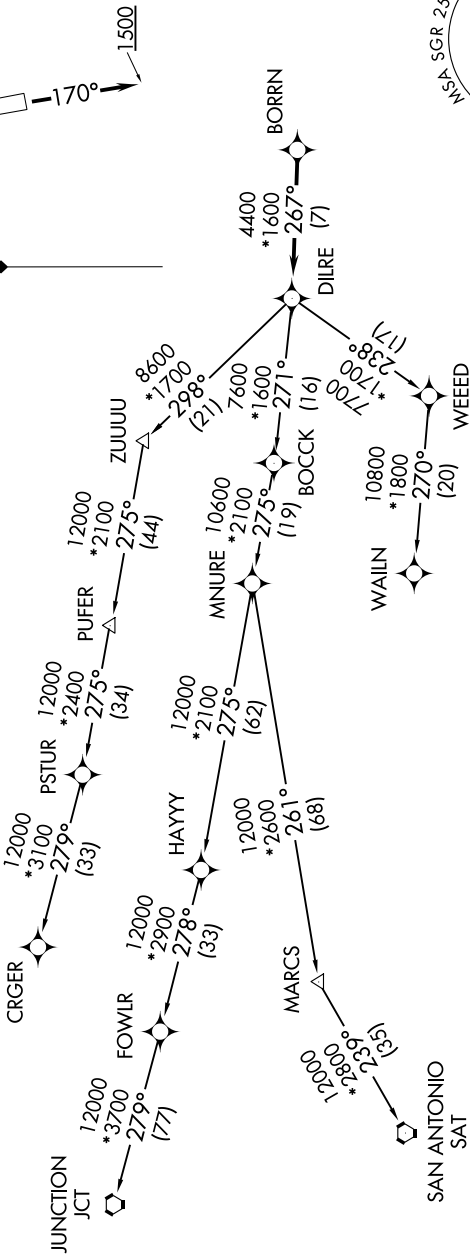
TAKEOFF MINIMUMS
Rwys 17, 35: Standard with minimum
climb of 500'/NM to 600.

- ATIS 118.125
- CLNC DEL 121.4
- CLNC DEL (When twr closed) 119.25
- GND CON 121.4
- SUGAR LAND TOWER* 118.65 (CTAF)
- HOUSTON DEP CON 123.8 257.7



NOTE: Chart not to scale.

SC-5, 16 APR 2026 to 14 MAY 2026



NOTE: CRGR-TRANSITION ATC assigned only for aircraft departing 54T, AXH, EFD, GLS, HPY, IWS, LBX, LVJ, SGR, TME, T00, T41.

(CONTINUED ON FOLLOWING PAGE)

SC-5, 16 APR 2026 to 14 MAY 2026

BORRN SIX DEPARTURE (RNAV)

(BORRN6.BORRN) 30NOV23

HOUSTON, TEXAS

SUGAR LAND RGNL (SGR)