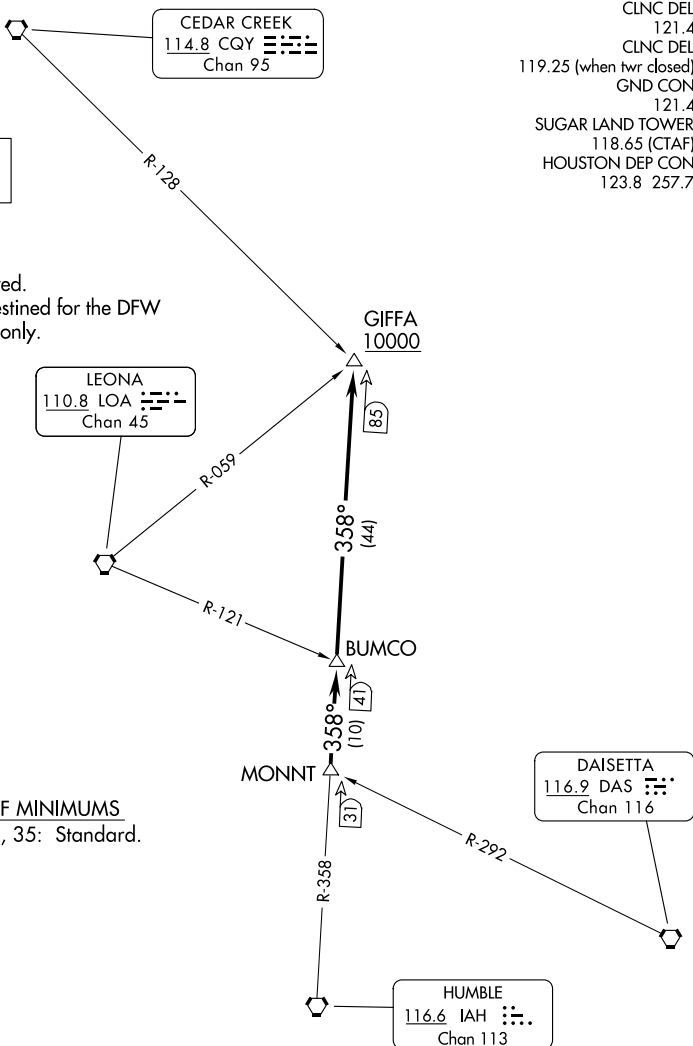


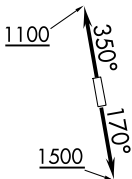
ATIS
 118.125
 CLNC DEL
 121.4
 CLNC DEL
 119.25 (when twr closed)
 GND CON
 121.4
 SUGAR LAND TOWER*
 118.65 (CTAF)
 HOUSTON DEP CON
 123.8 257.7

**TOP ALTITUDE:
ASSIGNED BY ATC**

NOTE: RADAR required.
 NOTE: For aircraft destined for the DFW
 terminal area only.



TAKEOFF MINIMUMS
 Rwys 17, 35: Standard.



(CONTINUED ON FOLLOWING PAGE)

NOTE: Chart not to scale.

SC-5, 16 APR 2026 to 14 MAY 2026

SC-5, 16 APR 2026 to 14 MAY 2026