

LOC/DME I-TXH 110.7 Chan 44	APP CRS 350°	Rwy Ldg TDZE 78 Apt Elev 82	6016
---	------------------------	---	-------------

ILS or LOC RWY 35

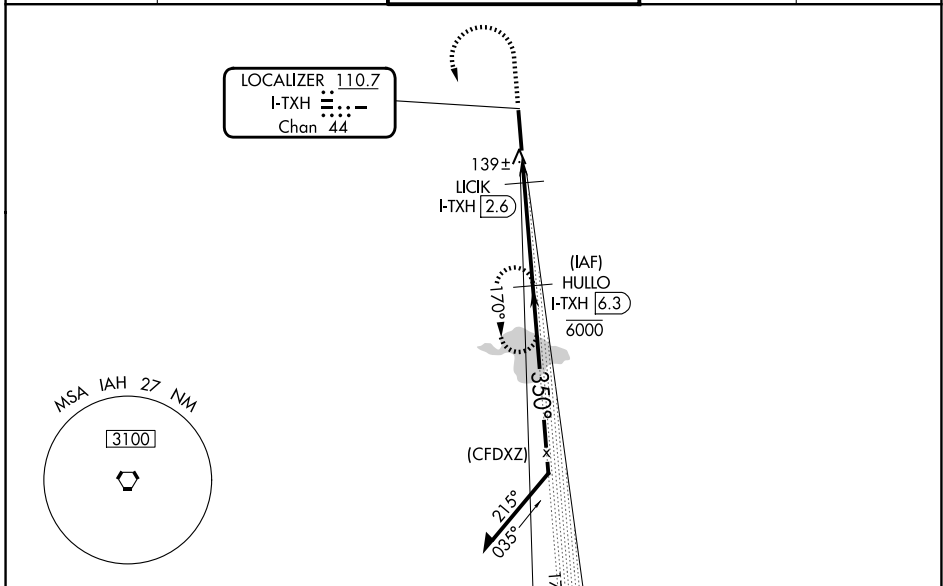
SUGAR LAND RGNL (SGR)

DME required.
RADAR required for procedure entry.

VDP NA when using William P Hobby altimeter setting. When local altimeter setting not received, use William P Hobby altimeter setting and increase all DA 51 feet and all MDA 60 feet and S-LOC 35 Cat C/D visibility 1/8 mile, and Circling Cat C/D visibility 1/4 mile.

MISSED APPROACH: Climb to 900 then climbing left turn to 2000 on I-TXH localizer south course to HULLO/I-TXH 6.3 DME and hold.

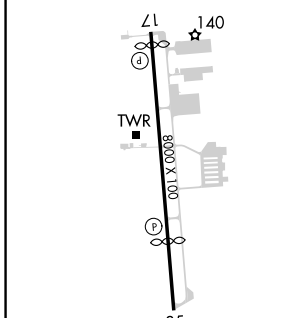
ATIS 118.125	HOUSTON APP CON 123.8 257.7	SUGAR LAND TOWER ★ 118.65 (CTAF) 0	GND CON 121.4	UNICOM 122.95
------------------------	---------------------------------------	--	-------------------------	-------------------------



SC-5, 16 APR 2026 to 14 MAY 2026

SC-5, 16 APR 2026 to 14 MAY 2026

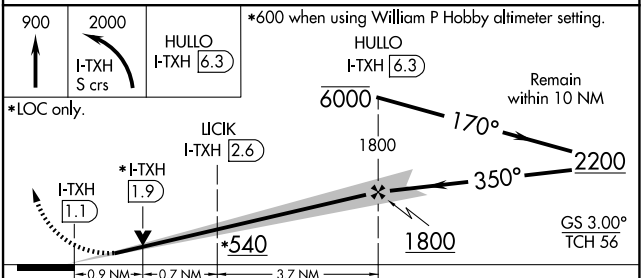
ELEV 82	TDZE 78
---------	---------



REIL Rwy 17 and 35 **0**
HIRL Rwy 17-35 **0**

FAF to MAP 5.2 NM

Knots	60	90	120	150	180
Min:Sec	5:12	3:28	2:36	2:05	1:44



CATEGORY	A	B	C	D
S-ILS 35	278-3/4		200 (200-3/4)	
S-LOC 35	400-1		322 (400-1)	
CIRCLING	720-1	638 (700-1)	720-1 3/4 638 (700-1 3/4)	720-2 638 (700-2)