

(LFK4.LFK) 25331

AL-5537 (FAA)

SUGAR LAND RGNL (SGR)

LUFKIN FOUR DEPARTURE

HOUSTON, TEXAS

HOUSTON DEP CON
 123.8 257.7
 ATIS ★
 118.125
 CLNC DEL
 121.4
 CLNC DEL
 119.25 (When twr closed)
 GND CON
 121.4
 SUGAR LAND TOWER ★
 118.65 (CTAF)

**TOP ALTITUDE:
 ASSIGNED BY ATC**

LITTLE ROCK
 115.1 LIT
 Chan 98

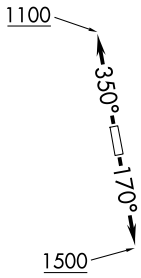
RADAR and DME required.

NOTE: For aircraft destined LIT or overflying LIT or PXV.

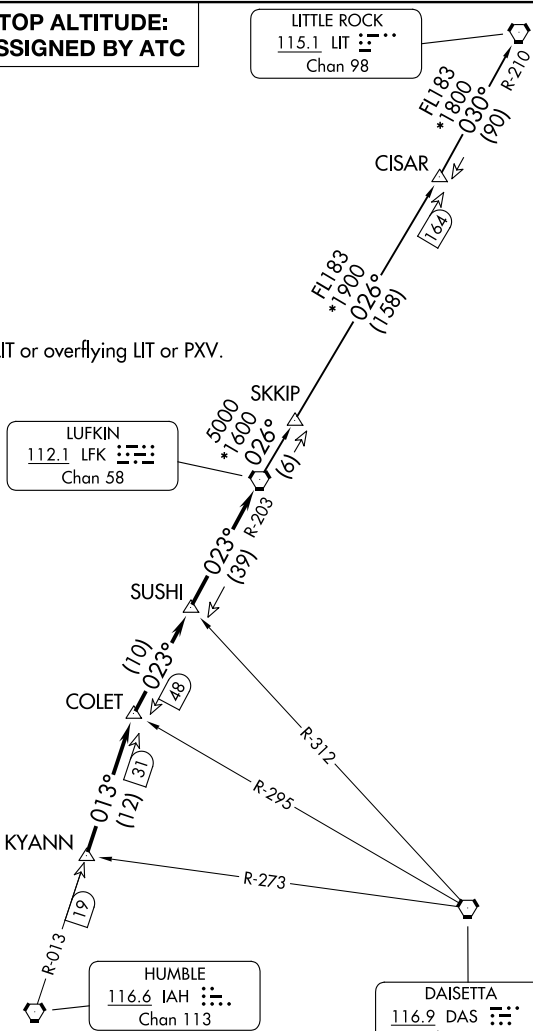
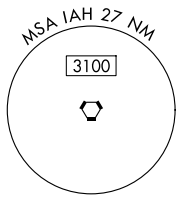
LUFKIN
 112.1 LFK
 Chan 58

HUMBLE
 116.6 IAH
 Chan 113

DAISETTA
 116.9 DAS
 Chan 116



TAKEOFF MINIMUMS
 Rwy 17, 35: Standard.



NOTE: Chart not to scale.

(CONTINUED ON FOLLOWING PAGE)

SC-5, 16 APR 2026 to 14 MAY 2026

SC-5, 16 APR 2026 to 14 MAY 2026

LUFKIN FOUR DEPARTURE

(LFK4.LFK) 27NOV25

HOUSTON, TEXAS

SUGAR LAND RGNL (SGR)