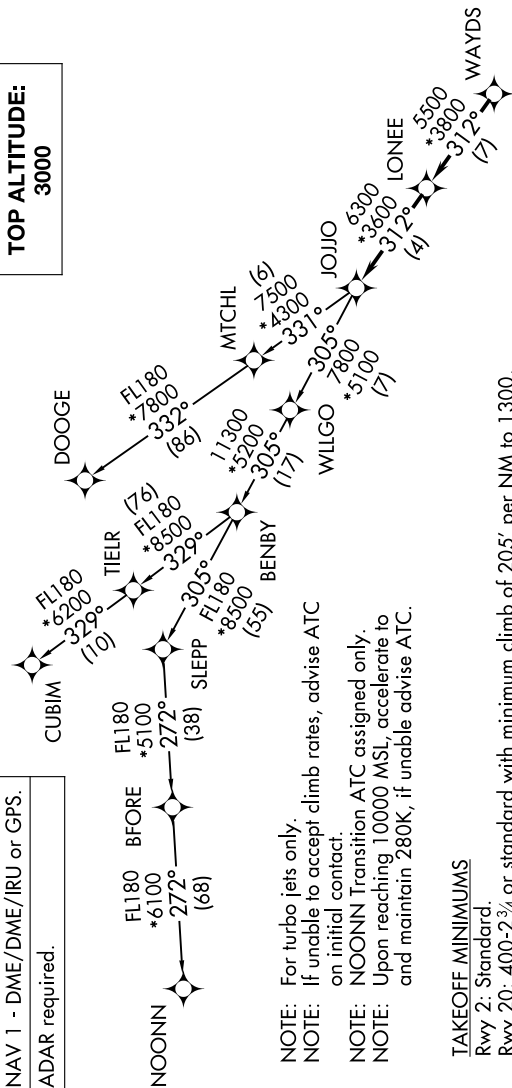


# JOJO FIVE DEPARTURE (RNAV)

CHARLOTTE DEP CON  
128.325 307.8  
AWOS-3  
118.175  
CLNC DEL  
127.35  
UNICOM (CTAF)  
122.725

**TOP ALTITUDE:**  
3000



- NOTE: For turbo jets only.
- NOTE: If unable to accept climb rates, advise ATC on initial contact.
- NOTE: NOONN Transition ATC assigned only.
- NOTE: Upon reaching 10000 MSL, accelerate to and maintain 280K, if unable advise ATC.

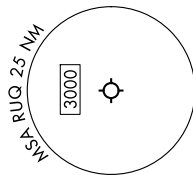
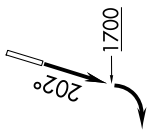
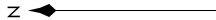
**TAKEOFF MINIMUMS**

Rwy 2: Standard.  
 Rwy 20: 400-2¾, or standard with minimum climb of 205' per NM to 1300, or alternatively, with standard takeoff minimums and a normal 200' per NM climb gradient, takeoff must occur no later than 1200' prior to DER.

**DEPARTURE ROUTE DESCRIPTION**

**TAKEOFF RUNWAY 2:** Climb on heading assigned by ATC, thence. . . .  
**TAKEOFF RUNWAY 20:** Climb on heading 202° to 1700 before turning right, then on heading assigned by ATC, thence. . . .  
 . . . on RADAR vectors to WAYDS, then on depicted route to JOJO. Then on assigned transition. Maintain 3000, expect filed altitude within 10 minutes after departure.

CUBIM TRANSITION (JOJO5.CUBIM)  
 DOOGE TRANSITION (JOJO5.DOOGE)  
 NOONN TRANSITION (JOJO5.NOONN)



NOTE: Chart not to scale.

# JOJO FIVE DEPARTURE (RNAV)