

(KWEEN5.KWEEN) 24081

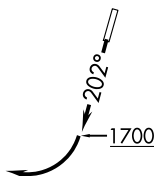
AL-5551 (FAA)

MID-CAROLINA RGNL (RUQ)
SALISBURY, NORTH CAROLINA

KWEEN FIVE DEPARTURE (RNAV)

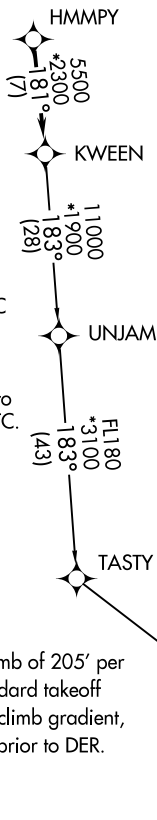
CHARLOTTE DEP CON
128.325 307.8
AWOS-3
118.175
CLNC DEL
127.35
UNICOM
122.725

**TOP ALTITUDE:
3000**



RNAV 1 - DME/DME/IRU or GPS.

RADAR required.



- NOTE: For turbo jets only.
- NOTE: Transponder code will be issued via PDC or Charlotte CLNC DEL.
- NOTE: If unable to accept climb rates, advise ATC on initial contact.
- NOTE: Upon reaching 10000 MSL, accelerate to and maintain 280K, if unable advise ATC.

TAKEOFF MINIMUMS

- Rwy 2: Standard.
- Rwy 20: 400-2¾ or standard with minimum climb of 205' per NM to 1300, or alternatively, with standard takeoff minimums and a normal 200' per NM climb gradient, takeoff must occur no later than 1200' prior to DER.

NOTE: Chart not to scale.

DEPARTURE ROUTE DESCRIPTION

TAKEOFF RUNWAY 2: Climb on heading assigned by ATC, thence...

TAKEOFF RUNWAY 20: Climb on heading 202° to 1700 before turning right, then on heading assigned by ATC, thence...

...on RADAR vectors to HMMPY, then on track 181° to KWEEN. Then on assigned transition. Maintain 3000, expect filed altitude within 10 minutes after departure.

PITRW TRANSITION (KWEEN5.PITRW)
UNJAM TRANSITION (KWEEN5.UNJAM)

KWEEN FIVE DEPARTURE (RNAV)

(KWEEN5.KWEEN) 21MAR24

SALISBURY, NORTH CAROLINA
MID-CAROLINA RGNL (RUQ)

SE-2, 16 APR 2026 to 14 MAY 2026

SE-2, 16 APR 2026 to 14 MAY 2026