

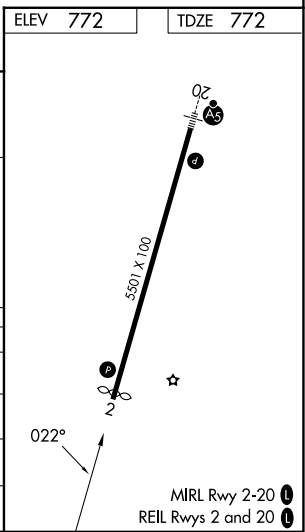
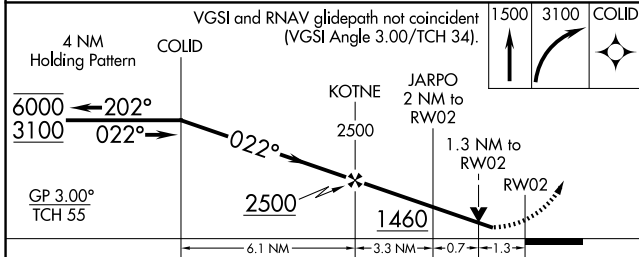
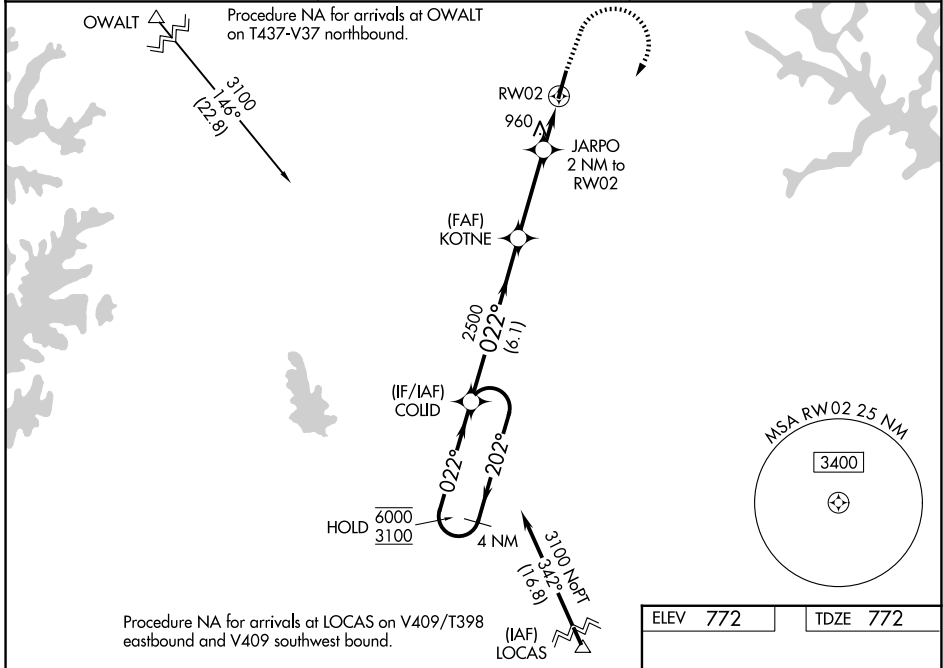
WAAS CH <b>40321</b> <b>W02A</b>	APP CRS <b>022°</b>	Rwy Ldg TDZE Apt Elev	<b>5375</b> <b>772</b> <b>772</b>
--	------------------------	-----------------------------	---

# RNAV (GPS) RWY 2

MID-CAROLINA RGNL (RUQ)

RNP APCH - GPS.	MISSED APPROACH: Climb to 1500 then climbing right turn to 3100 direct COLID and hold.
<p>Rwy 2 helicopter visibility reduction below 3/4 SM NA. For uncompensated Baro-VNAV systems, LNAV/VNAV NA below -16°C or above 54°C.</p>	

AWOS-3 <b>118.175</b>	CHARLOTTE APP CON <b>128.325 307.8</b>	UNICOM <b>122.725</b> (CTAF)
--------------------------	---	---------------------------------



CATEGORY	A	B	C	D
LPV DA	1138-1 366 (400-1)			
LNAV/VNAV DA	1181-1 1/8 409 (500-1 1/8)			
LNAV MDA	1220-1	448 (500-1)	1220-1 3/8	448 (500-1 3/8)
CIRCLING	1240-1 468 (500-1)	1260-1 488 (500-1)	1440-1 3/4 668 (700-1 3/4)	1440-2 668 (700-2)

SE-2, 16 APR 2026 to 14 MAY 2026

SE-2, 16 APR 2026 to 14 MAY 2026