


LOC I-GVQ <b>108.9</b>	APP CRS <b>282°</b>	Rwy Idg TDZE Apt Elev	<b>5499</b> <b>911</b> <b>914</b>
---------------------------	------------------------	-----------------------------	---

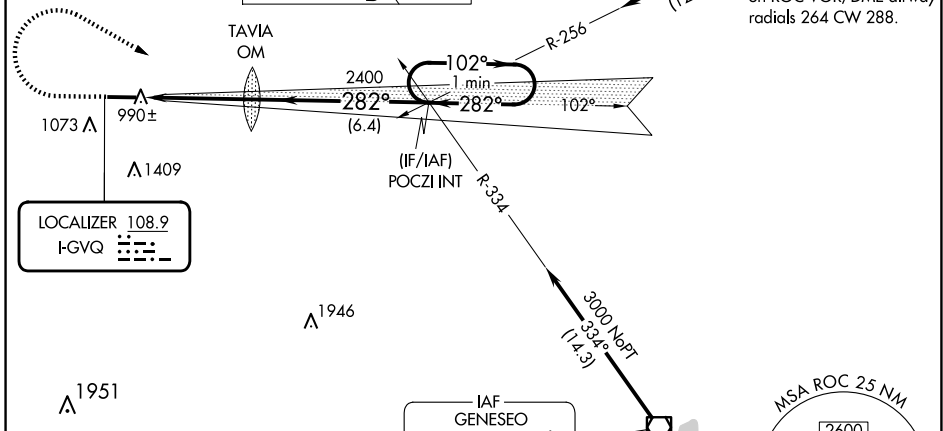
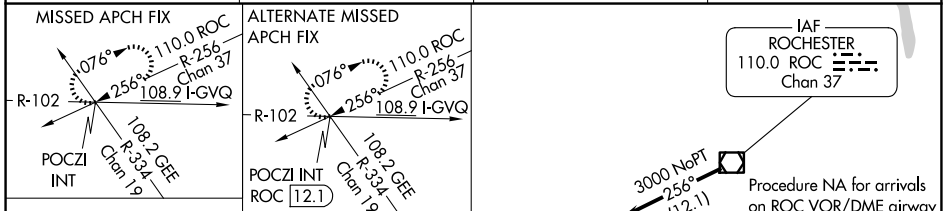
# ILS or LOC RWY 28

GENESEE COUNTY (GVQ)

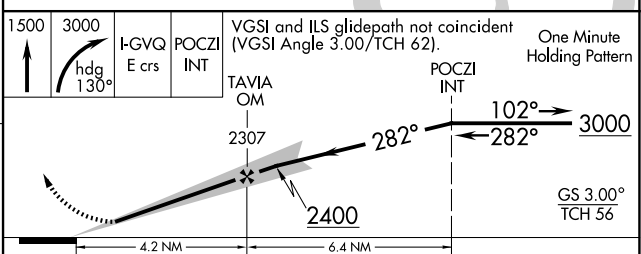
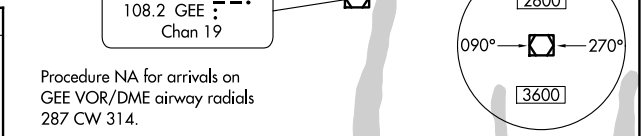
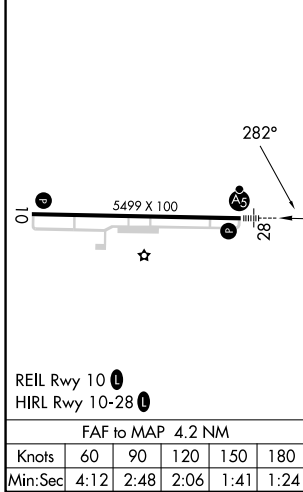
**⚠** When local altimeter setting not received, use Rochester altimeter setting: increase DA to 1213 feet; increase all MDA 120 feet and visibility S-LOC 28 Cats C and D ¼ SM and Circling Cats C and D ½ SM. Autopilot coupled approach NA below 1433.

**MALS**  MISSED APPROACH: Climb to 1500 then climbing right turn to 3000 via heading 130° and I-GVQ east course to POCZI INT and hold.

AWOS-3PT <b>127.525</b>	ROCHESTER APP CON <b>123.7 322.3</b>	CLNC DEL <b>121.8</b>	UNICOM <b>122.7 (CTAF)</b> <b>0</b>
----------------------------	---	--------------------------	--



ELEV 914	TDZE 911
----------	----------



CATEGORY	A	B	C	D
S-ILS 28	1111-½ 200 (200-½)			
S-LOC 28	1260-½ 349 (400-½)			1260-¾ 349 (400-¾)
CIRCLING	1380-1	466 (500-1)	1720-2¼ 806 (900-2¼)	1720-2½ 806 (900-2½)

NE-2, 16 APR 2026 to 14 MAY 2026

NE-2, 16 APR 2026 to 14 MAY 2026