

WAAS CH 63105 W36A	APP CRS 001°	Rwy Ldg 4997 TDZE 1181 Apt Elev 1191
--	------------------------	---

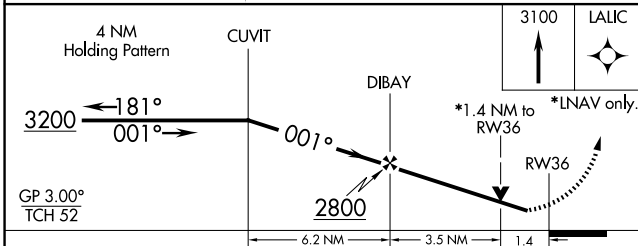
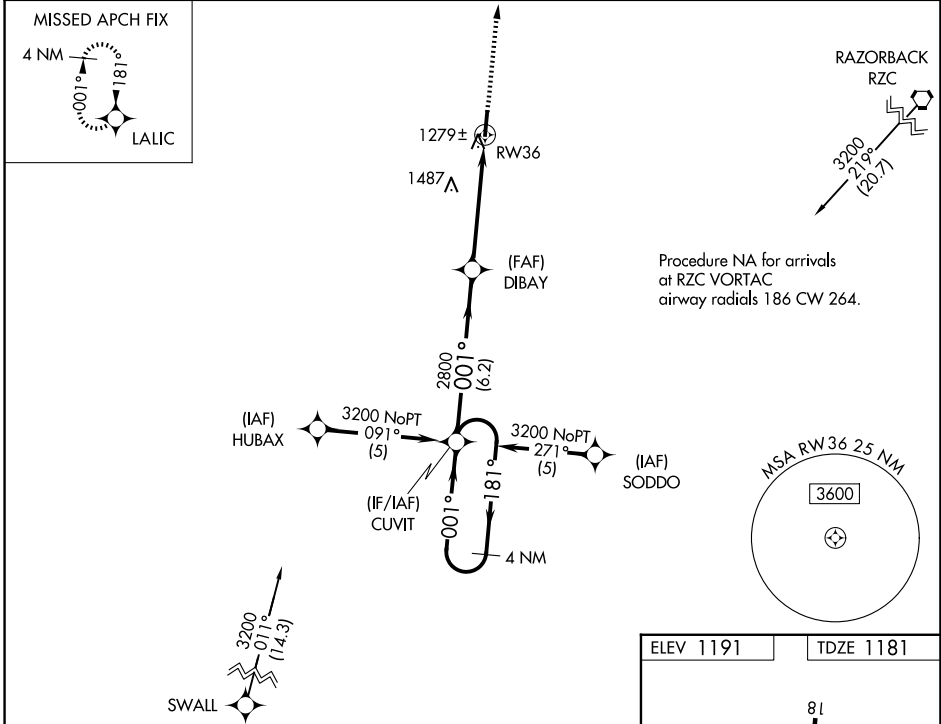
RNAV (GPS) RWY 36

SMITH FLD (SLG)

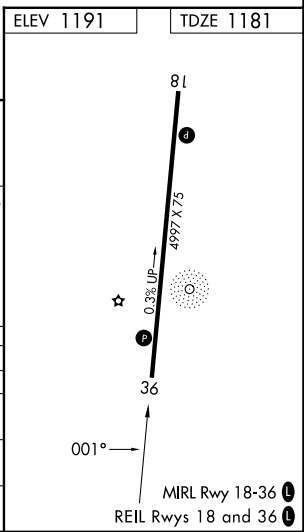
⚠ When local altimeter setting not received, use Northwest Arkansas MSL altimeter setting and increase LPV DA to 1469 feet, increase LNAV/VNAV DA to 1587 feet; increase all MDAs 40 feet. For uncompensated Baro-VNAV systems, LNAV/VNAV NA below -17°C (2°F) or above 46°C (114°F). DME/DME RNP-0.3 NA. Visibility reduction by helicopters NA. Baro-VNAV and VDP NA when using Northwest Arkansas MSL altimeter setting.

MISSED APPROACH: Climb to 3100 direct LALIC and hold.

AWOS-3PT 118.375	RAZORBACK APP CON* 121.0 244.575	UNICOM 122.8 (CTAF) 0
----------------------------	--	---------------------------------



CATEGORY	A	B	C	D
LPV DA		1431-1	250 (300-1)	
LNAV/VNAV DA		1549-1½	368 (400-1½)	
LNAV MDA	1660-1	479 (500-1)	1660-1½	1660-1½
	469 (500-1)	529 (600-1)	479 (500-1½)	479 (500-1½)
CIRCLING	1660-1	1720-1	1800-1¾	1880-2¼
	469 (500-1)	529 (600-1)	609 (700-1¾)	689 (700-2¼)



SC-1, 16 APR 2026 to 14 MAY 2026

SC-1, 16 APR 2026 to 14 MAY 2026