

(TEBOW.TEBOW2) 25107

AL-5570 (FAA)

TEBOW TWO ARRIVAL (RNAV)

JACKSONVILLE, FLORIDA

JACKSONVILLE APP CON
 119.0 127.0 269.9 292.15 (270°-090°)
 127.775 377.075 (181°-269°)
 124.9 308.4 (091°-180°)
 CRG ATIS
 125.4
 JAX D-ATIS
 125.85
 KNRB ATIS*
 236.775

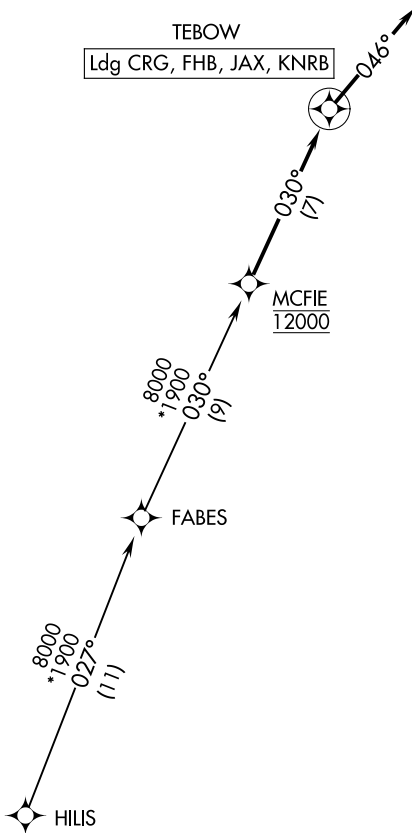
| |
|----------------------------|
| RNAV 1-DME/DME/IRU or GPS. |
| RADAR required. |

FERNANDINA
 BEACH MUNI

JACKSONVILLE INTL

MAYPORT NS
 (ADM DAVID L MCDONALD FLD)

JACKSONVILLE EXEC
 AT CRAIG



SE-3, 16 APR 2026 to 14 MAY 2026

SE-3, 16 APR 2026 to 14 MAY 2026

ARRIVAL ROUTE DESCRIPTION

HILIS TRANSITION (HILIS.TEBOW2)

LANDING ALL AIRPORTS: From MCFIE on track 030° to TEBOW, then on track 046°. Expect RADAR vectors to final approach course.

TEBOW TWO ARRIVAL (RNAV)
 (TEBOW.TEBOW2) 17APR25

JACKSONVILLE, FLORIDA