

EL DORADO ONE DEPARTURE

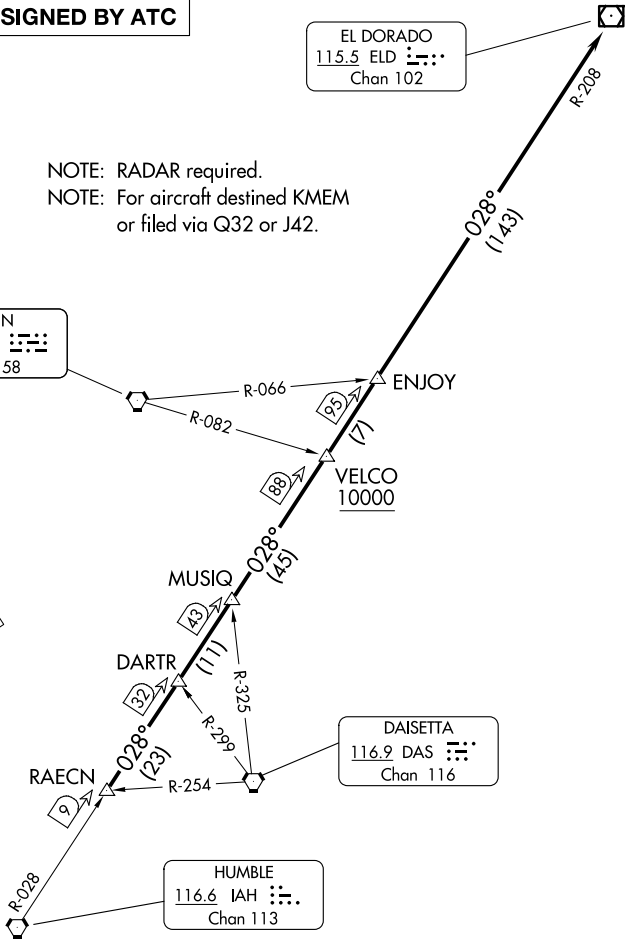
ATIS
 118.325
 CLNC DEL
 120.45
 CLNC DEL
 119.55 (when twr closed)
 GND CON
 120.45
 CONROE TOWER ★
 124.125 (CTAF)
 HOUSTON DEP CON
 119.7 281.4

**TOP ALTITUDE:
ASSIGNED BY ATC**

EL DORADO
 115.5 ELD :
 Chan 102

NOTE: RADAR required.
 NOTE: For aircraft destined KMEM
 or filed via Q32 or J42.

LUFKIN
 112.1 LFK :
 Chan 58



DAISSETTA
 116.9 DAS :
 Chan 116

HUMBLE
 116.6 IAH :
 Chan 113

TAKEOFF MINIMUMS
 Rwys 1, 14, 19, 32: Standard.

NOTE: Chart not to scale.

DEPARTURE ROUTE DESCRIPTION

TAKEOFF ALL RUNWAYS: When entering controlled airspace, climb on assigned heading for RADAR vectors to RAECN INT. Maintain ATC assigned altitude. Expect filed altitude 10 minutes after departure, thence. . . .

. . . .on IAH R-028 and the ELD R-208 to ELD VOR/DME, cross VELCO INT at or above 10000.