

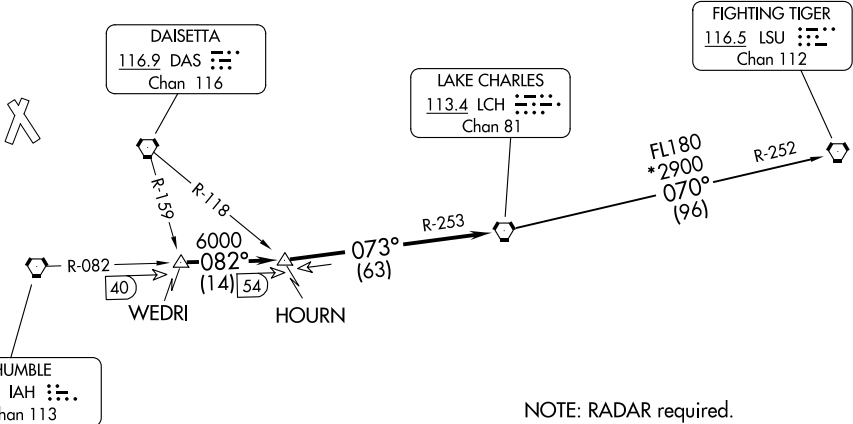
(LCH5.LCH) 24137

# LAKE CHARLES FIVE DEPARTURE

CONROE/NORTH HOUSTON RGNL (CXXO)  
AL-5573 (FAA) HOUSTON, TEXAS

ATIS  
118.325  
CLNC DEL  
120.45  
CLNC DEL (when twr closed)  
119.55  
GND CON  
120.45  
CONROE TOWER ★  
124.125 (CTAF)  
HOUSTON DEP CON  
119.7 281.4

**TOP ALTITUDE:  
ASSIGNED BY ATC**



NOTE: RADAR required.

TAKEOFF MINIMUMS  
Rwy 1, 14, 19, 32 Standard.

NOTE: Chart not to scale.



## DEPARTURE ROUTE DESCRIPTION

When entering controlled airspace, climb on assigned heading for RADAR vectors to WEDRI INT. Maintain ATC assigned altitude. Expect filed altitude 10 minutes after departure, thence. . . .

. . . . on IAH R-082 to HOURS INT, then on LCH R-253 to LCH VORTAC.

FIGHTING TIGERS TRANSITION (LCH5.LSU): From over LCH VORTAC on LCH R-070 and LSU R-252 to LSU VORTAC.

LAKE CHARLES FIVE DEPARTURE  
(LCH5.LCH) 22JUN17

HOUSTON, TEXAS  
CONROE/NORTH HOUSTON RGNL (CXXO)

SC-5, 16 APR 2026 to 14 MAY 2026

SC-5, 16 APR 2026 to 14 MAY 2026