

(LFK4.LFK) 25331

AL-5573 (FAA)

CONROE/NORTH HOUSTON RGNL (C'X'O)
HOUSTON, TEXAS

LUFKIN FOUR DEPARTURE

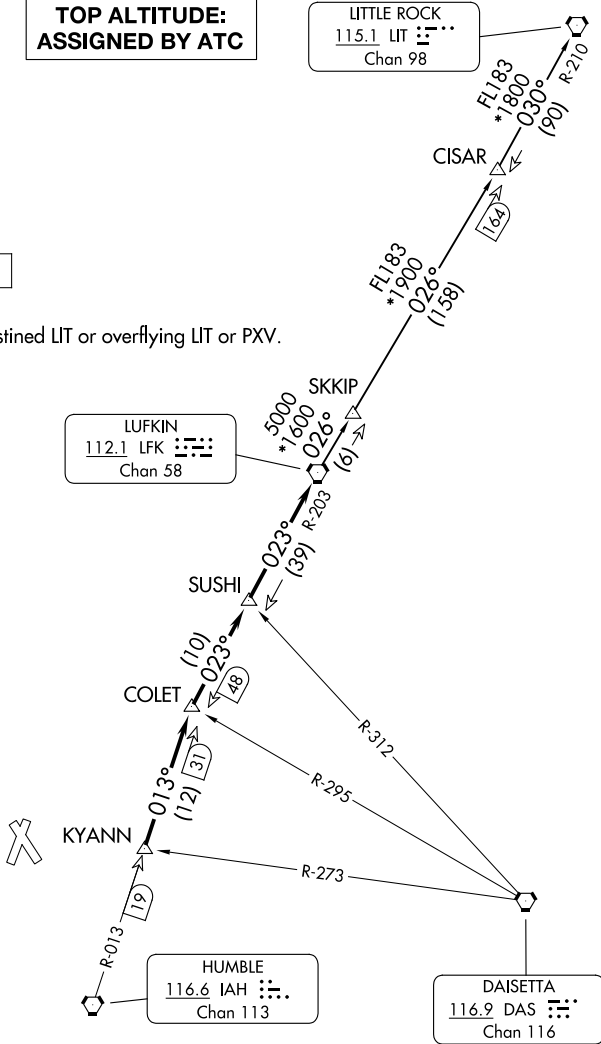
HOUSTON DEP CON
119.7 281.4
ATIS
118.325
CLNC DEL
120.45
CLNC DEL
119.55 (When twr closed)
GND CON
120.45
CONROE TOWER *
124.125 (CTAF)

**TOP ALTITUDE:
ASSIGNED BY ATC**

LITTLE ROCK
115.1 LIT :::::
Chan 98

RADAR and DME required.

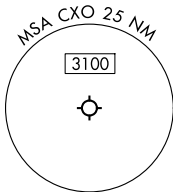
NOTE: For aircraft destined LIT or overflying LIT or PXV.



LUFKIN
112.1 LFK :::::
Chan 58

HUMBLE
116.6 IAH :::::
Chan 113

DAISETTA
116.2 DAS :::::
Chan 116



TAKEOFF MINIMUMS
Rwys 1, 14, 19, 32: Standard.

NOTE: Chart not to scale.

(CONTINUED ON FOLLOWING PAGE)

SC-5, 16 APR 2026 to 14 MAY 2026

SC-5, 16 APR 2026 to 14 MAY 2026

LUFKIN FOUR DEPARTURE
(LFK4.LFK) 27NOV25

HOUSTON, TEXAS
CONROE/NORTH HOUSTON RGNL (C'X'O)