

WYLSN EIGHT DEPARTURE (RNAV)

HOUSTON, TEXAS

**TOP ALTITUDE:
ASSIGNED BY ATC**

ATIS
 118.325
 CLNC DEL
 120.45
 CLNC DEL
 119.55 (when hwr closed)
 GND CON
 120.45
 CONROE TOWER *
 124.125 (CTAF)
 HOUSTON DEP CON
 119.7 281.4

NOTE: RADAR required.
 NOTE: DME/DME/IRU or GPS required.
 NOTE: RNAV 1.

TAKEOFF MINIMUMS

Rwys 1, 14, 19, 32: Standard with minimum climb of 500' per NM to 760.



DEPARTURE ROUTE DESCRIPTION

TAKEOFF RUNWAY 1: Climb on heading 012° to 760 for RADAR vectors to WYLSN, thence. . .

TAKEOFF RUNWAY 14: Climb on heading 140° to 760 for RADAR vectors to WYLSN, thence. . .

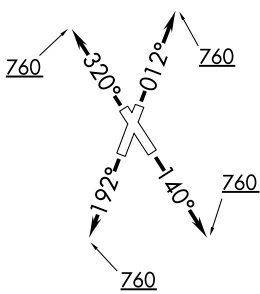
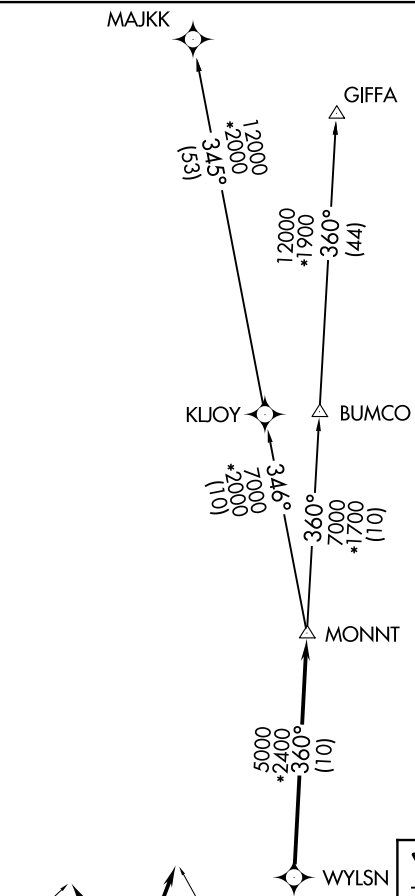
TAKEOFF RUNWAY 19: Climb on heading 192° to 760 for RADAR vectors to WYLSN, thence. . .

TAKEOFF RUNWAY 32: Climb on heading 320° to 760 for RADAR vectors to WYLSN, thence. . .

. . . on track 360° to MONNT, then on (transition).
Maintain ATC assigned altitude. Expect filed altitude 10 minutes after departure.

GIFFA TRANSITION (WYLSN8.GIFFA)

MAJKK TRANSITION (WYLSN8.MAJKK)



NOTE: Chart not to scale.

SC-5, 16 APR 2026 to 14 MAY 2026

SC-5, 16 APR 2026 to 14 MAY 2026