

APP CRS	Rwy Ldg	<b>4401</b>
<b>092°</b>	TDZE	<b>796</b>
	Apt Elev	<b>796</b>

# RNAV (GPS) RWY 9

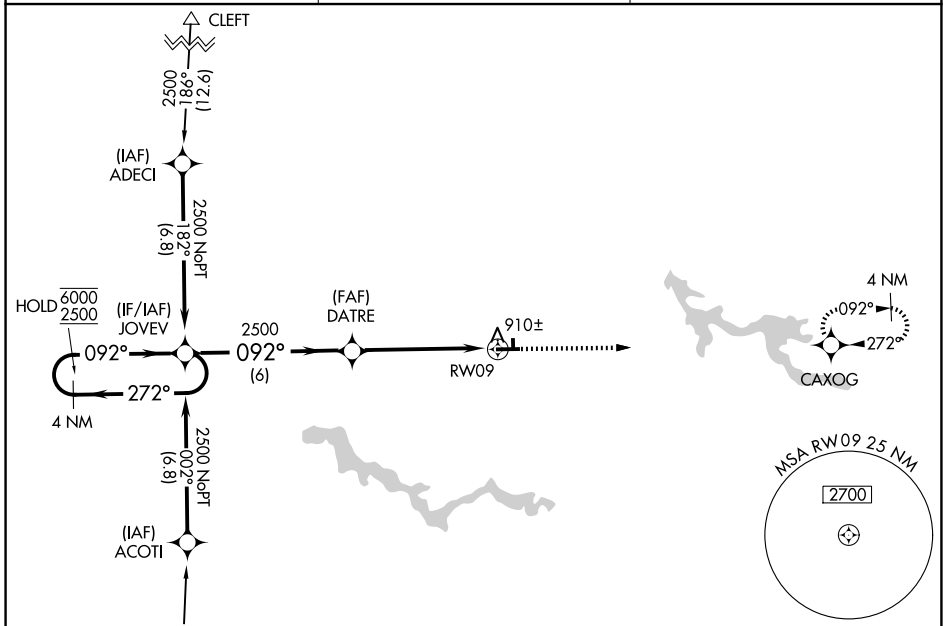
WABASH MUNI (IWH)

RNP APCH - GPS.

**⚠ NA** Circling Rwy 9, 18, 36 NA at night. Rwy 9 helicopter visibility reduction below 1 SM NA. Use Kokomo altimeter setting; when not received, use Marion altimeter setting and increase all MDAs 40 feet and visibility LNAV Cat C ¼ SM.

MISSED APPROACH: Climb to 2500 direct CAXOG and hold.

OKK AWOS-3PT <b>128.675</b>	GRISSOM APP CON ★ <b>121.05 338.275</b>	UNICOM <b>122.8 (CTAF) 0</b>
--------------------------------	--	---------------------------------



EC-2, 16 APR 2026 to 14 MAY 2026

EC-2, 16 APR 2026 to 14 MAY 2026



4 NM Holding Pattern		VGSi and descent angles not coincident (VGSi Angle 3.00/TCH 32).		2500	CAXOG
6000	2500	2500	2500	2500	2500
← 272°	← 092°	← 092°	← 092°	← 092°	← 092°
6 NM	6 NM	5.2 NM	5.2 NM	5.2 NM	5.2 NM

CATEGORY	A	B	C	D
LNAV MDA	1200-1	404 (500-1)	1200-1½ 404 (500-1½)	NA
CIRCLING	1260-1 464 (500-1)	1340-1 544 (600-1)	1540-2¼ 744 (800-2¼)	NA

IURL Rwy 18-36  
MIRL Rwy 9-27 0  
REIL Rws 9 and 27 0