

RNAV (GPS) RWY 24

LAKEWOOD (N12)

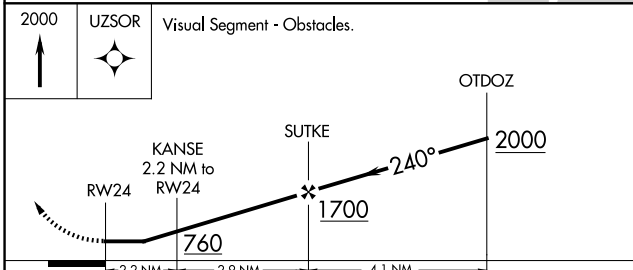
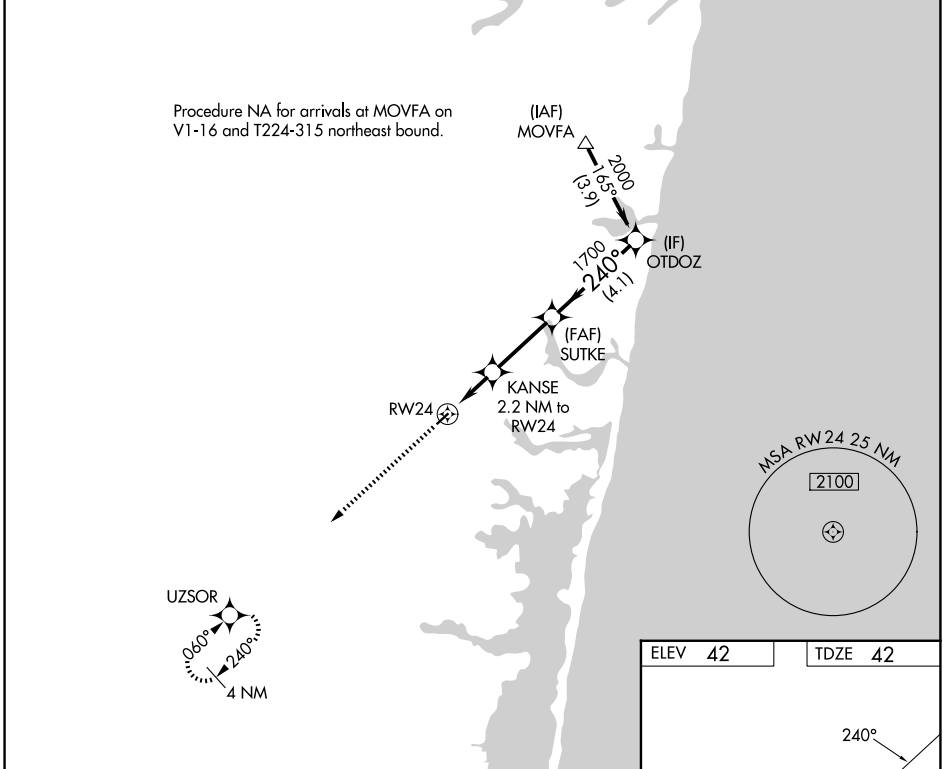
APP CRS 240°	Rwy Ldg TDZE Apt Elev	2987 42 42
------------------------	-----------------------------	---------------------------------------

RNP APCH - GPS.

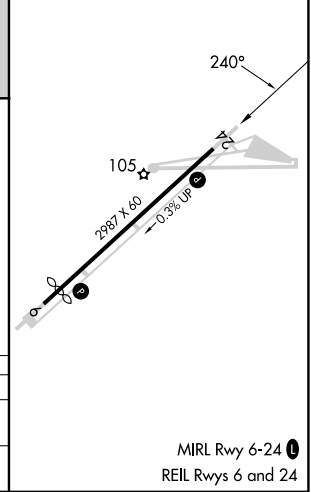
▼ Rwy 24 helicopter visibility reduction below 1 SM NA.
▲ NA Straight-in Rwy 24 NA at night, Circling Rwy 24 NA at night.

MISSED APPROACH: Climb to 2000 direct UZSOR and hold.

AWOS-AV 122.8	MC GUIRE APP CON 126,475 363,8	GCO 121.725	UNICOM 122.8 (CTAF)
-------------------------	--	-----------------------	-------------------------------



ELEV 42	TDZE 42
---------	---------



CATEGORY	A	B	C	D
LNVA MDA	520-1	478 (500-1)		NA
CIRCLING	540-1 498 (500-1)	620-1 578 (600-1)		NA

NE-2, 16 APR 2026 to 14 MAY 2026

NE-2, 16 APR 2026 to 14 MAY 2026