

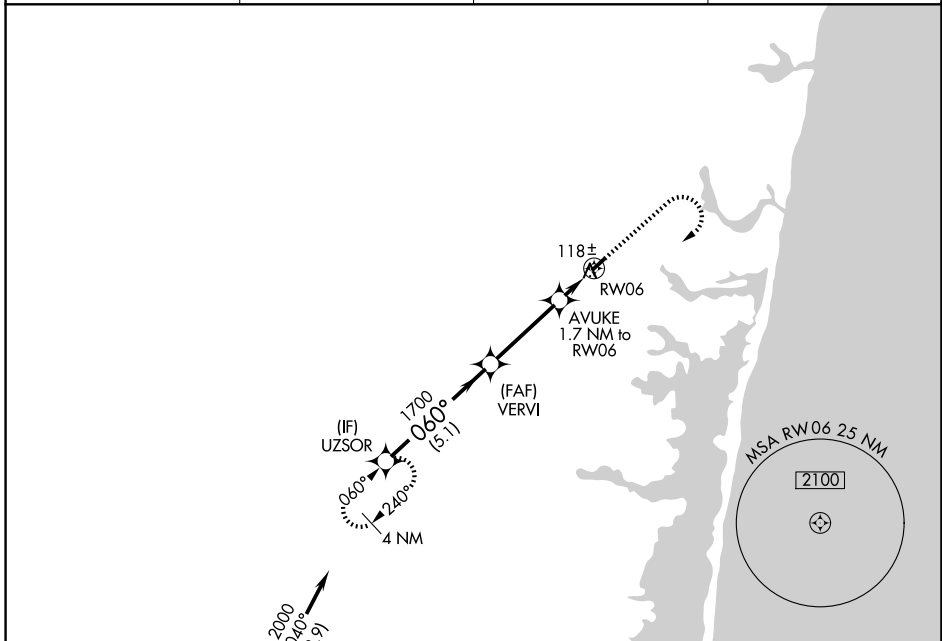
WAAS CH 49038 W06A	APP CRS 060°	Rwy Ldg TDZE Apt Elev	2726 41 42
--	------------------------	-----------------------------	---------------------------------------

RNAV (GPS) RWY 6

LAKEWOOD (N12)

RNP APCH - GPS.	MISSED APPROACH: Climb to 1000 then climbing right turn to 2000 direct UZSOR and hold.
<p>▼ Circling Rwy 24 NA at night.</p> <p>▲ NA Rwy 6 helicopter visibility reduction below 3/4 SM NA.</p>	

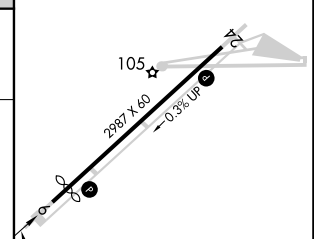
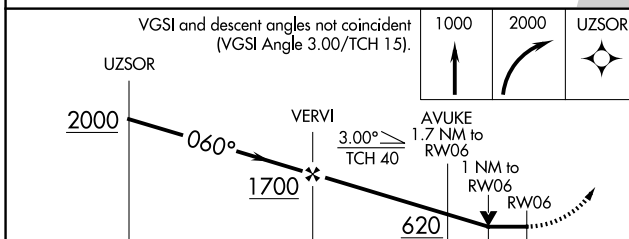
AWOS-AV 122.8	MC GUIRE APP CON 126.475 363.8	GCO 121.725	UNICOM 122.8 (CTAF)
-------------------------	--	-----------------------	-------------------------------



NE-2, 16 APR 2026 to 14 MAY 2026

NE-2, 16 APR 2026 to 14 MAY 2026

ELEV 42	TDZE 41
Procedure NA for arrival on CYN VORTAC airway radials 046 CW 100.	



	5.1 NM	3.4 NM	0.7 NM	1 NM
CATEGORY	A	B	C	D
LP MDA	380-1	339 (400-1)		NA
LNNAV MDA	580-1	539 (600-1)		NA
CIRCLING	580-1 538 (600-1)	620-1 578 (600-1)		NA

