

PIKES THREE DEPARTURE

AL-5612 (FAA)

ROCKY MOUNTAIN METRO (BJC)
DENVER, COLORADO

RADAR required.

**TOP ALTITUDE:
ASSIGNED BY ATC**

DENVER DEP CON
125.125 263.025
ATIS
126.25
CLNC DEL
132.6

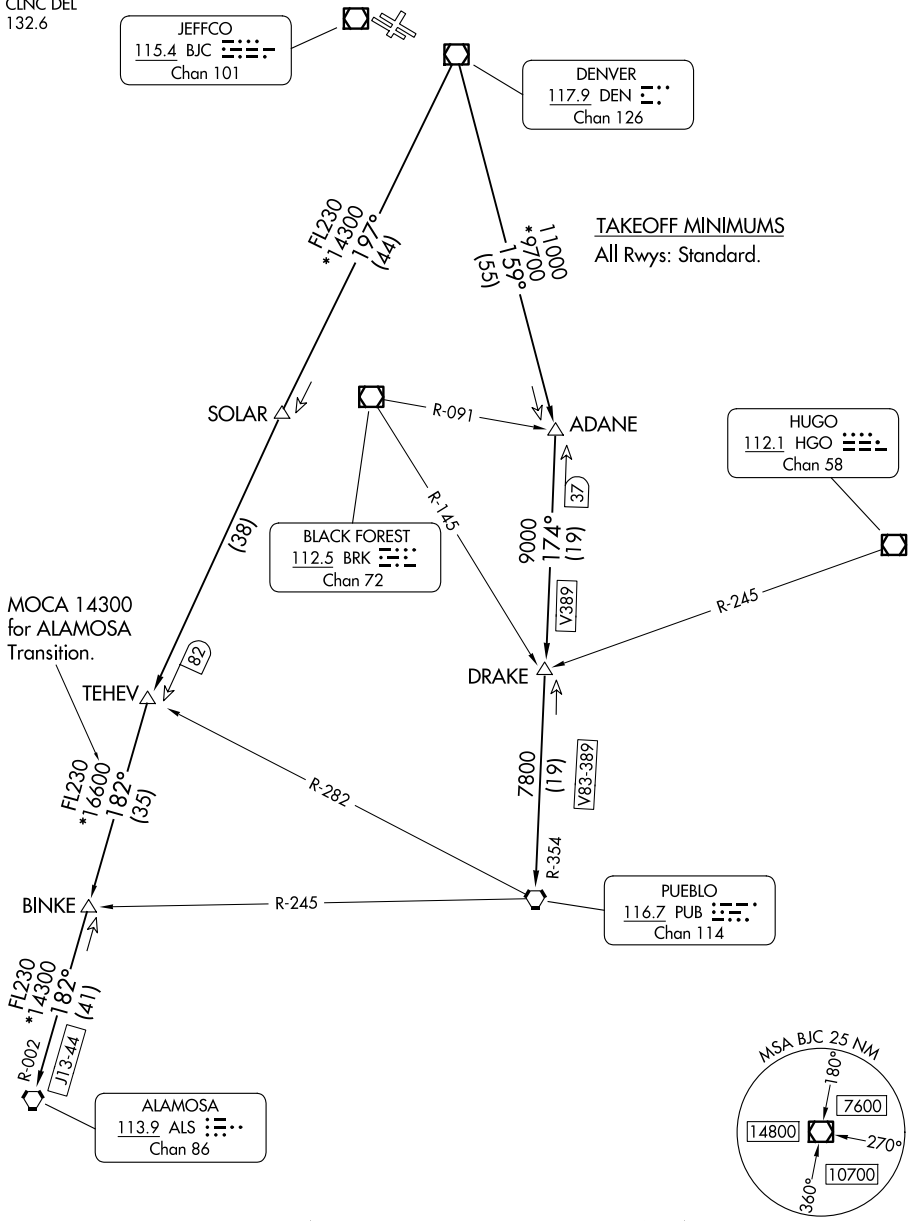
JEFFCO
115.4 BJC
Chan 101

DENVER
117.9 DEN
Chan 126

TAKEOFF MINIMUMS
All Rwy: Standard.

SW-1, 16 APR 2026 to 14 MAY 2026

SW-1, 16 APR 2026 to 14 MAY 2026



NOTE: Chart not to scale.

(CONTINUED ON FOLLOWING PAGE)