

WAAS CH 56208 W26A	APP CRS 257°	Rwy Idg 4002 TDZE 1224 Apt Elev 1228
----------------------------------------	------------------------	-----------------------------------------------------------------

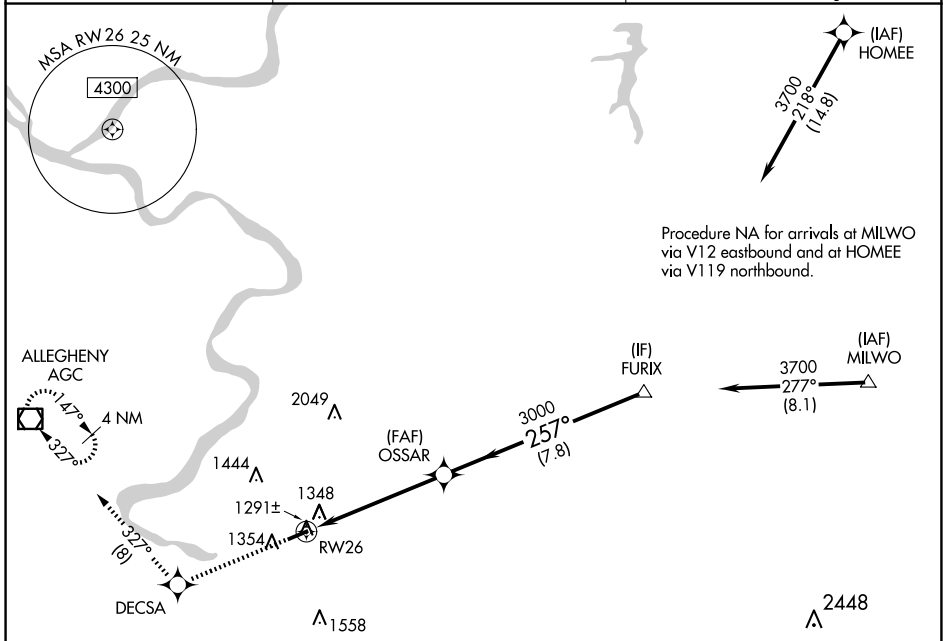
RNAV (GPS) RWY 26

ROSTRAVER (FWQ)

⚠ DME/DME RNP-0.3 NA. When local altimeter setting not received, use Allegheny County altimeter setting and increase all DA/MDA 40 feet, and increase LNAV Cats C and D visibility to 1½ mile. Rwy 26 helicopter visibility reduction below ¾ SM NA. Rwy 8 helicopter visibility reduction below 1 SM NA. Circling Rwy 8 NA at night.

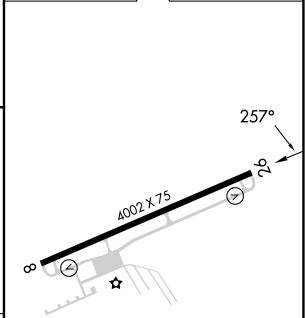
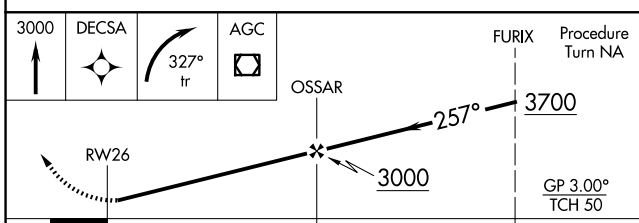
⚠ NA MISSED APPROACH: Climb to 3000 direct DECSA, and right turn via 327° track to AGC VOR/DME and hold.

AWOS-3 118.475	PITTSBURGH APP CON 119.35 337.4	UNICOM 122.8 (CTAF) 0
--------------------------	-------------------------------------------	---------------------------------



Procedure NA for arrivals at MILWO via V12 eastbound and at HOME E via V119 northbound.

ELEV 1228	TDZE 1224
-----------	-----------



CATEGORY	A	B	C	D
LPV DA		1500-1	276 (300-1)	
LNAV/VNAV	DA	NA		
LNAV MDA		1600-1	376 (400-1)	
CIRCLING	1700-1 472 (500-1)	1760-1 532 (600-1)	1760-1½ 532 (600-1½)	1920-2¼ 692 (700-2¼)

MIRL Rwy 8-26 0
REIL Rws 8 and 26 0

NE-4, 16 APR 2026 to 14 MAY 2026

NE-4, 16 APR 2026 to 14 MAY 2026