

WAAS CH <b>40331</b> <b>W27A</b>	APP CRS <b>269°</b>	Rwy Ldg TDZE Apt Elev	<b>5100</b> <b>686</b> <b>706</b>
--	------------------------	-----------------------------	---

# RNAV (GPS) RWY 27

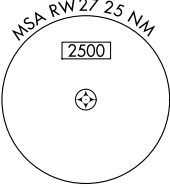
MACOMB MUNI (MQB)

RNP APCH - GPS.

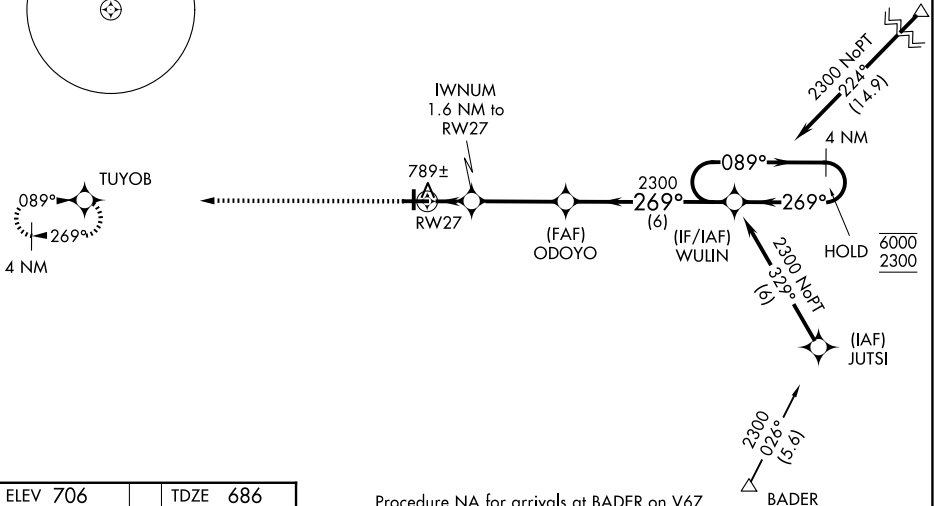
- Baro-VNAV and VDP NA when using Burlington altimeter setting. Circling NA to Rwy 18 and 36.
- For uncompensated Baro-VNAV systems, LNAV/VNAV NA below -16°C or above 54°C. When local altimeter setting not received, use Burlington altimeter setting and increase LPV DA to 949 feet; increase LNAV/VNAV DA to 1040 feet; increase all MDAs 80 feet and visibility Cat C/D ¼ SM.

MISSED APPROACH:  
Climb to 2300 direct  
TUYOB and hold.

AWOS-3 <b>119.025</b>	CHICAGO CENTER <b>135.6 316.1</b>	UNICOM <b>122.8 (CTAF) 0</b>
--------------------------	--------------------------------------	---------------------------------

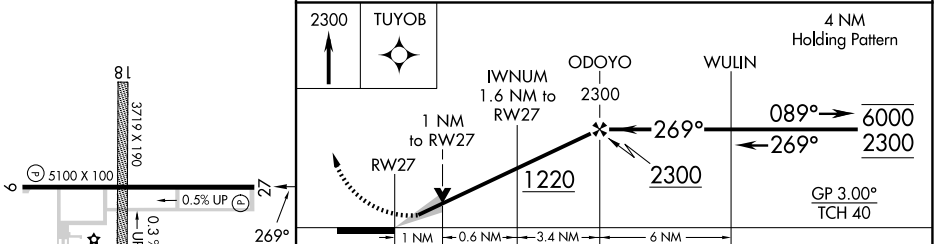


Procedure NA for arrivals at LOGOS on V48 eastbound.



ELEV 706	TDZE 686
----------	----------

Procedure NA for arrivals at BADER on V67 southeast bound.



CATEGORY	A	B	C	D
LPV DA		886-1	200 (200-1)	
LNAV/VNAV DA		977-1	291 (300-1)	
LNAV MDA		1040-1	354 (400-1)	
CIRCLING	1120-1 414 (500-1)	1260-1 554 (600-1)	1520-2½ 814 (900-2½)	1520-2¾ 814 (900-2¾)

REIL Rwy 9 and 27  
HIRL Rwy 9-27

EC-3, 16 APR 2026 to 14 MAY 2026

EC-3, 16 APR 2026 to 14 MAY 2026