

LOC I-GBY 109.7	APP CRS 125°	Rwy Ldg TDZE Apt Elev	7221 1183 1183
---------------------------	------------------------	-----------------------------	---

ILS or LOC RWY 12

SOUTHWEST MINNESOTA RGNL MARSHALL/RYAN FLD (MML)

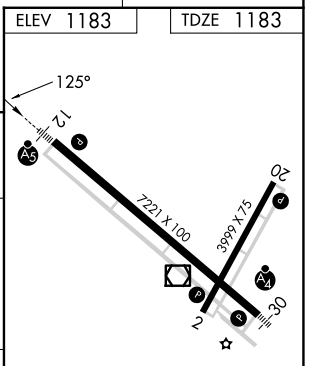
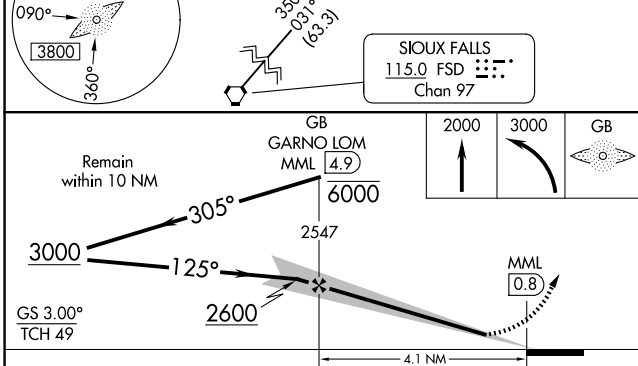
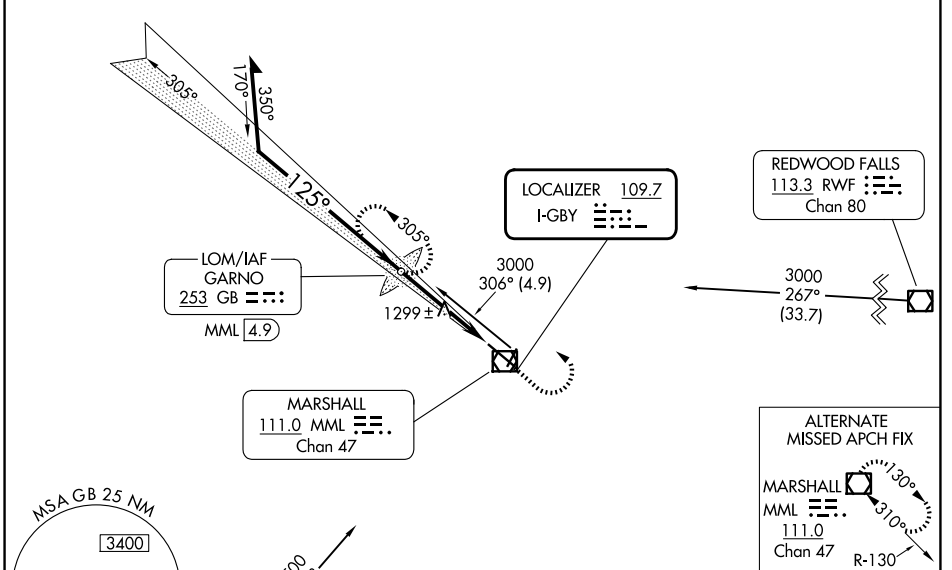
ADF or DME required.

NA When local altimeter setting not received, use Tracy Muni altimeter setting and increase ILS DA to 1441 feet and all MDA 60 feet, S-LOC Cat C/D visibility 1/8 SM and Circling visibility Cat C/D 1/4 SM. Inop table does not apply. For inop ALS increase S-LOC 12 all Cats visibility to 1 SM. Inop table does not apply when using Tracy Muni altimeter setting. For inop ALS when using Tracy Muni altimeter setting, increase S-LOC 12 Cat A/B visibility to 1 SM.

MALSR

MISSED APPROACH: Climb to 2000 then climbing left turn to 3000 direct GARNO LOM/ MML 4.9 DME and hold.

AWOS-3PT 120.150	MINNEAPOLIS CENTER 127.1 290.2	GCO 121.725	UNICOM 122.8 (CTAF) 0
----------------------------	--	-----------------------	---------------------------------



CATEGORY	A	B	C	D
S-ILS 12		1383-1/2	200 (200-1/2)	
S-LOC 12	1560-1/2	377 (400-1/2)	1560-5/8	377 (400-5/8)
CIRCLING	1640-1	457 (500-1)	1820-1 3/4 637 (700-1 3/4)	1840-2 657 (700-2)

ELEV 1183	TDZE 1183				
HIRL Rwy 12-30	REIL Rwys 2 and 20	MIRL Rwy 2-20			
FAF to MAP 4.1 NM					
Knots	60	90	120	150	180
Min:Sec	4:06	2:44	2:03	1:38	1:22

ILS or LOC RWY 12

NC-1, 16 APR 2026 to 14 MAY 2026

NC-1, 16 APR 2026 to 14 MAY 2026