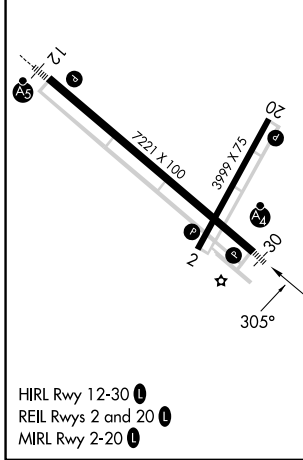
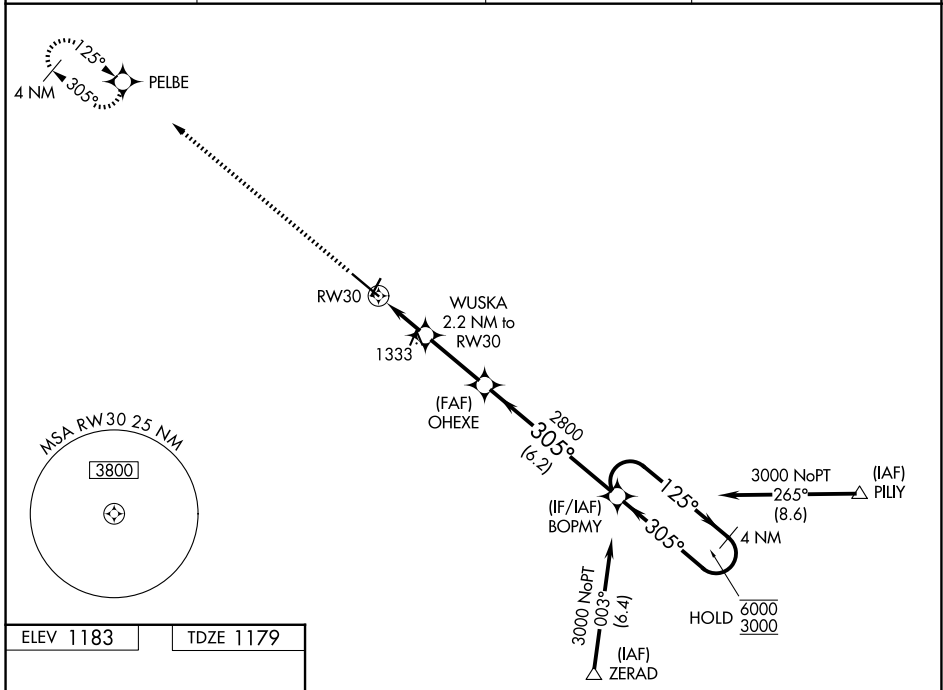


WAAS CH 86321 W30A	APP CRS 305°	Rwy Ldg 7221 TDZE 1179 Apt Elev 1183
--	------------------------	---

RNAV (GPS) RWY 30

SOUTHWEST MINNESOTA RGNL MARSHALL/RYAN FLD (MML)

RNP APCH - GPS		MALSF	MISSED APPROACH: Climb to 3200 direct PELBE and hold.
AWOS-3PT 120.150	MINNEAPOLIS CENTER 127.1 290.2	GCO 121.725	UNICOM 122.8 (CTAF) 0



ELEV 1183	TDZE 1179	3200 PELBE VGSi and RNAV glidepath not coincident (VGSi Angle 3.00/TCH 32).			
		WUSKA 2.2 NM to RW30 OHEXE 2800 BOPMY 4 NM Holding Pattern ZERAD (IAF) HOLD 6000/3000 GP 3.00° TCH 40			
1.2 NM 1 NM 2.8 NM 6.2 NM		1.2 NM 1 NM 2.8 NM 6.2 NM			
CATEGORY	A	B	C	D	
LPV DA	1429- ³ / ₄		250 (300- ³ / ₄)		
LNAV/VNAV DA	1464- ³ / ₄		285 (300- ³ / ₄)		
LNAV MDA	1600- ³ / ₄	421 (500- ³ / ₄)	1600-1	421 (500-1)	
CIRCLING	1640-1	457 (500-1)	1820-1 ³ / ₄ 637 (700-1 ³ / ₄)	1840-2 657 (700-2)	

NC-1, 16 APR 2026 to 14 MAY 2026

NC-1, 16 APR 2026 to 14 MAY 2026