

WAAS CH <b>70716</b> <b>W24A</b>	APP CRS <b>240°</b>	Rwy Idg TDZE Apt Elev	<b>3898</b> <b>884</b> <b>887</b>
--	------------------------	-----------------------------	---

# RNAV (GPS) RWY 24

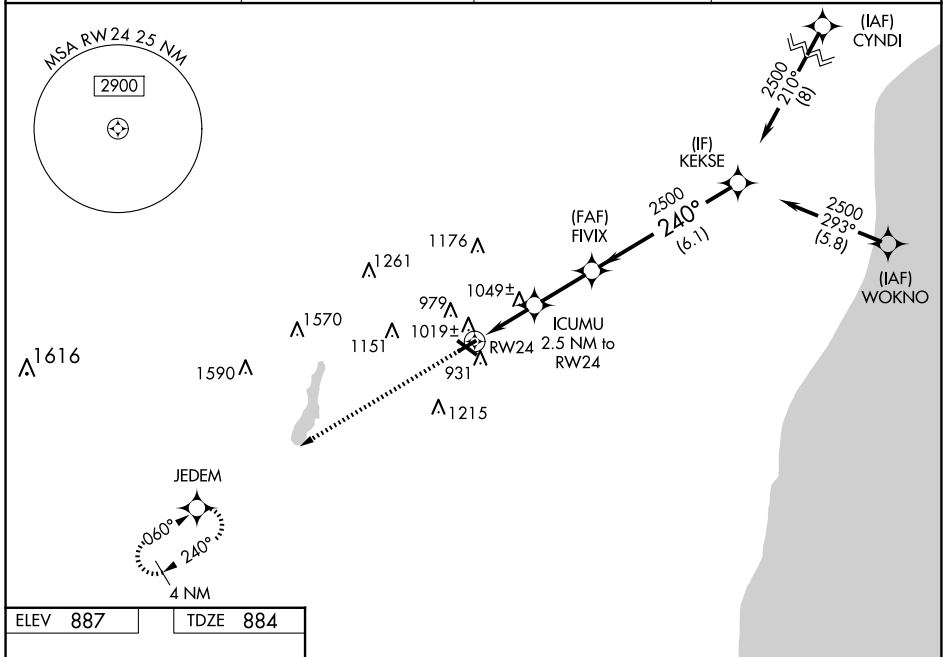
WEST BEND MUNI (E/TB)

RNP APCH - GPS.

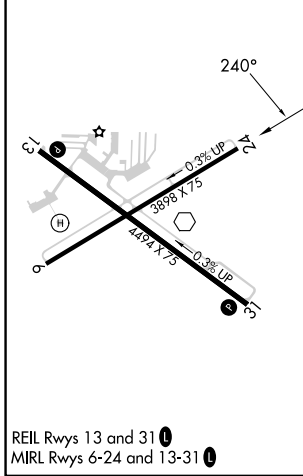
▼ For uncompensated Baro-VNAV systems, LNAV/VNAV NA below -16°C or above 47°C. Rwy 24 helicopter visibility reduction below 3/4 SM NA. Baro-VNAV and VDP NA when using Lawrence J Timmerman altimeter setting. When local altimeter setting not received, use Milwaukee/Lawrence J Timmerman altimeter setting and increase LPV DA to 1260 feet; LNAV/VNAV DA to 1433 feet and all visibility 3/4 SM; increase all MDA 80 feet and LNAV Cat C/D and Circling Cat C/D visibility 1/4 SM.

⚠ MISSED APPROACH: Climb to 3000 direct JEDEM and hold.

AWOS-3 <b>120.0</b>	MILWAUKEE APP CON <b>125.35 307.0</b>	CLNC DEL <b>124.75</b>	UNICOM <b>123.05 (CTAF) 0</b>
------------------------	--	---------------------------	----------------------------------



ELEV 887	TDZE 884
----------	----------



3000	JEDEM	Procedure Turn NA		
* LNAV only	ICUMU 2.5 NM to RW24	FVIX	KEKSE	2500
	* 1.2 NM to RW24	* 1720	2500	GP 3.00° TCH 45
	1.2 NM	1.3 NM	2.4 NM	6.1 NM
CATEGORY	A	B	C	D
LPV DA	1196-1 312 (400-1)			
LNAV/VNAV DA	1369-1 3/4 485 (500-1 3/4)			
LNAV MDA	1300-1	416 (500-1)	1300-1 1/4	416 (500-1 1/4)
CIRCLING	1420-1 533 (600-1)	1520-1 633 (700-1)	1560-2 673 (700-2)	1560-2 1/4 673 (700-2 1/4)

EC-3, 16 APR 2026 to 14 MAY 2026

EC-3, 16 APR 2026 to 14 MAY 2026