

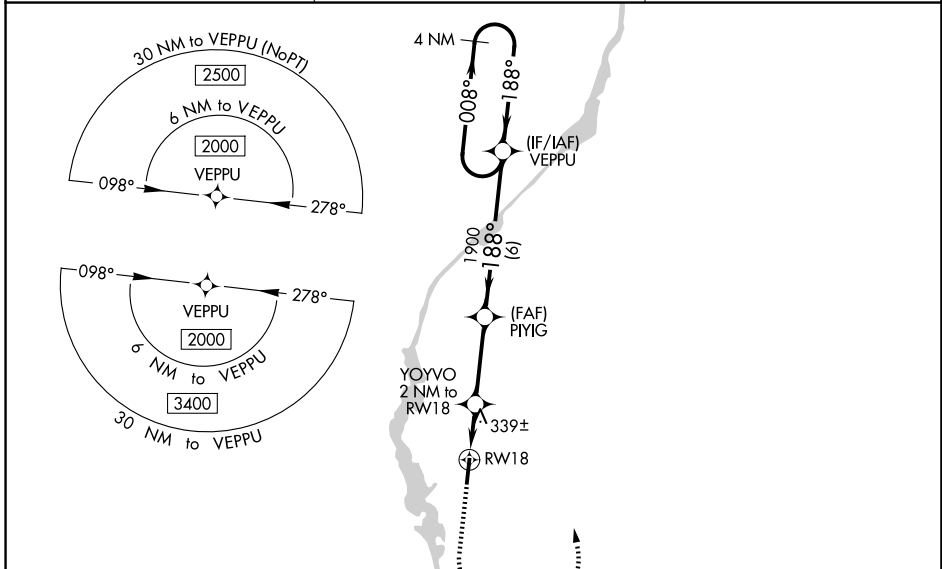
WAAS CH <b>56604</b> <b>W18A</b>	APP CRS <b>188°</b>	Rwy Ldg TDZE Apt Elev	<b>4999</b> <b>226</b> <b>226</b>
--	------------------------	-----------------------------	---

# RNAV (GPS) RWY 18

MONROE COUNTY (M40)

RNP APCH. ▼ For uncompensated Baro-VNAV systems, LNAV/VNAV NA below -15°C or above 54°C.	MISSED APPROACH: Climb to 800 then climbing left turn to 2000 direct VEPPU and hold.
--	--

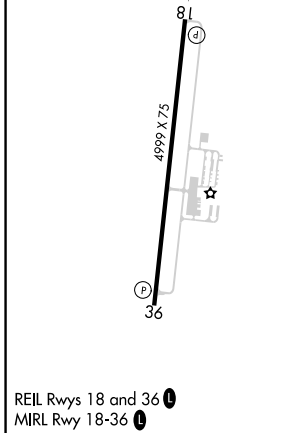
AWOS-3P <b>118.475</b>	COLUMBUS APP CON ★ <b>126.075 239.25</b>	UNICOM <b>122.8 (CTAF) 0</b>
---------------------------	---	---------------------------------



SC-4, 16 APR 2026 to 14 MAY 2026

SC-4, 16 APR 2026 to 14 MAY 2026

ELEV 226	TDZE 226
----------	----------



800	2000	VEPPU	VGSi and RNAV glidepath not coincident (VGSi Angle 3.00/TCH 40).	
*LNAV only.		YOYVO 2 NM to RW18	PIYIG 1900	VEPPU 4 NM Holding Pattern
*1.1 NM to RW18		*900	1900	2000
1.1 NM		0.9	3.1 NM	6 NM
CATEGORY	A	B	C	D
LPV DA		476-3/4	250 (300-3/4)	
LNAV/VNAV DA		504-7/8	278 (300-7/8)	
LNAV MDA		600-1	374 (400-1)	
CIRCLING	660-1 434 (500-1)	680-1 454 (500-1)	820-1 1/2 594 (600-1 1/2)	860-2 634 (700-2)