

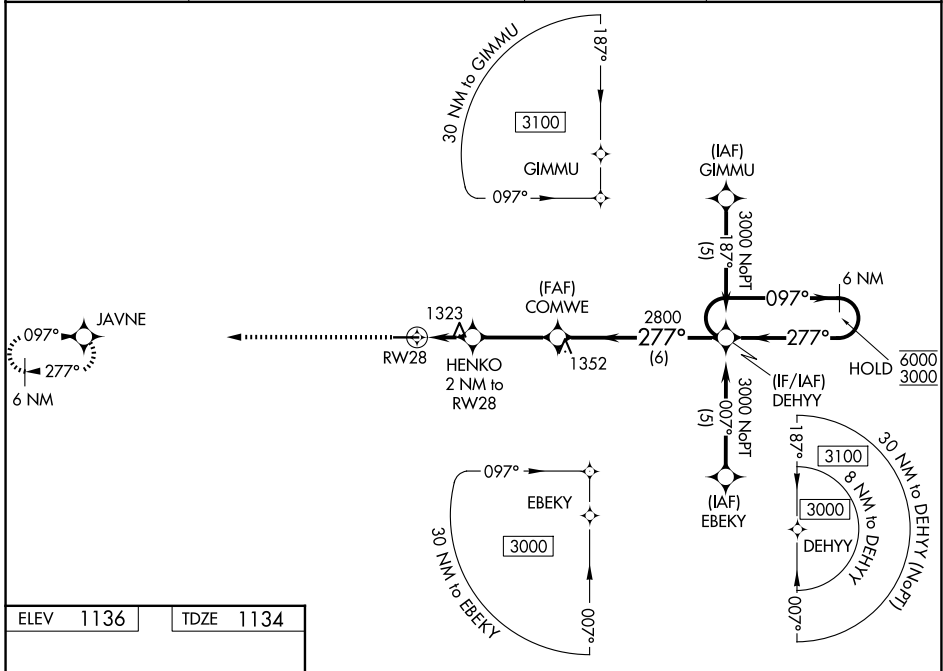
WAAS CH 82215 W28A	APP CRS 277°	Rwy Ldg 4972 TDZE 1134 Apt Elev 1136
----------------------------------------	------------------------	-----------------------------------------------------------------

RNAV (GPS) RWY 28

WAYNE COUNTY (BJJ)

RNP APCH - GPS.	<p>MISSED APPROACH: Climb to 3000 direct JAVNE and hold.</p>
<p>▼ Baro-VNAV NA when using CAK altimeter setting. For uncompensated Baro-VNAV systems, LNAV/VNAV NA below -19°C or above 54°C. Rwy 28 helicopter visibility reduction below 1 SM NA. When local altimeter setting not received, use CAK altimeter setting and increase LPV DA to 1458 feet; increase LNAV/VNAV DA to 1649 feet; increase all MDAs 60 feet; and Circling visibility Cat C/D ¼ SM.</p>	

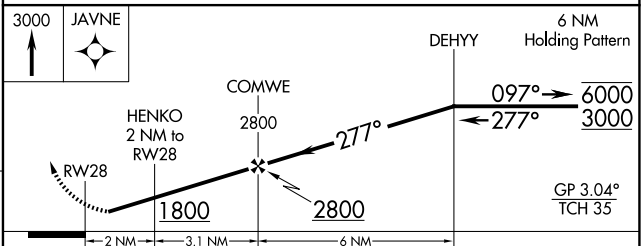
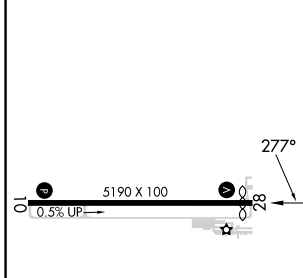
ASOS 118.075	CLEVELAND APP CON * 125.5 371.875	CLNC DEL 121.75	UNICOM 122.975 (CTAF) ①
------------------------	---------------------------------------------	---------------------------	-----------------------------------



EC-2, 16 APR 2026 to 14 MAY 2026

EC-2, 16 APR 2026 to 14 MAY 2026

ELEV 1136	TDZE 1134
-----------	-----------



CATEGORY	A	B	C	D
LPV DA		1398-1	264 (300-1)	
LNAV/VNAV DA		1580-1½	446 (500-1½)	
LNAV MDA	1580-1	446 (500-1)	1580-1½	446 (500-1½)
CIRCLING	1600-1 464 (500-1)	1700-1 564 (600-1)	1800-1¾ 664 (700-1¾)	1840-2¼ 704 (800-2¼)

REIL Rwy 10 and 28 ①
HIRL Rwy 10-28 ①