

VOR/DME BSV <b>114.05</b> Chan <b>87</b> (Y)	APP CRS <b>115°</b>	Rwy Ldg <b>5190</b> TDZE <b>1113</b> Apt Elev <b>1136</b>
----------------------------------------------------	------------------------	-----------------------------------------------------------------

# VOR RWY 10

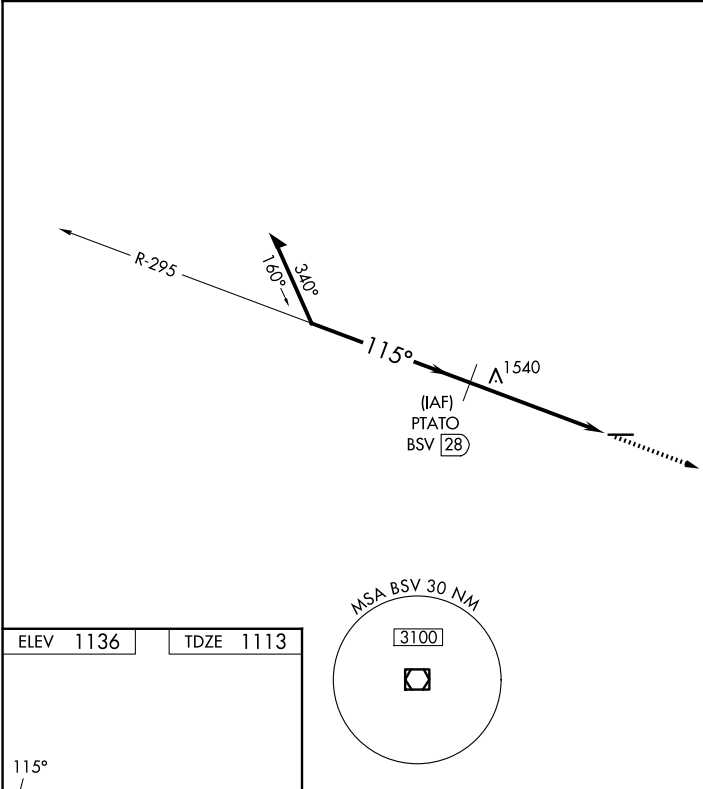
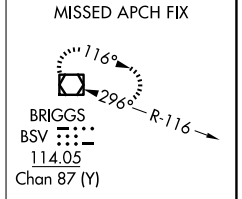
WAYNE COUNTY (BJJ)

DME required.

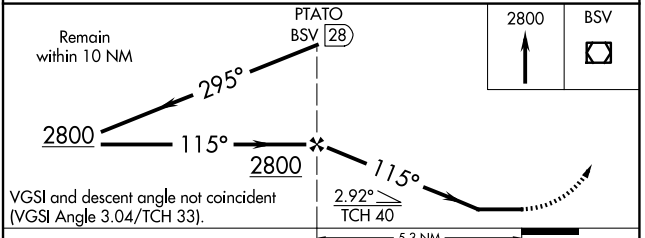
**▼** When local altimeter setting not received, use Akron-Canton Rgnl altimeter setting and increase all MDA 60 feet; increase S-10 Cat C/D and Circling Cat C/D visibility ¼ SM. Rwy 10 helicopter visibility reduction below ¼ SM NA.

MISSED APPROACH: Climb to 2800 direct BSV VOR/DME and hold.

ASOS <b>118.075</b>	CLEVELAND APP CON ★ <b>125.5 371.875</b>	CLNC DEL <b>121.75</b>	UNICOM <b>122.975</b> (CTAF) <b>1</b>
------------------------	---------------------------------------------	---------------------------	------------------------------------------



ELEV 1136	TDZE 1113
REIL Rwys 10 and 28 <b>1</b>	
HIRL Rwy 10-28 <b>1</b>	
FAF to MAP 5.3 NM	
Knots	60 90 120 150 180
Min:Sec	5:18 3:32 2:39 2:07 1:46



CATEGORY	A	B	C	D
S-10	1840-1 727 (800-1)	1840-1 ¼ 727 (800-1 ¼)	1840-2 727 (800-2)	1840-2 ¼ 727 (800-2 ¼)
CIRCLING	1840-1 704 (800-1)	1840-1 ¼ 704 (800-1 ¼)	1840-2 704 (800-2)	1840-2 ¼ 704 (800-2 ¼)

EC-2, 16 APR 2026 to 14 MAY 2026

EC-2, 16 APR 2026 to 14 MAY 2026