

(OCN1.OCN) 24305

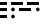
AL-5666 (FAA)

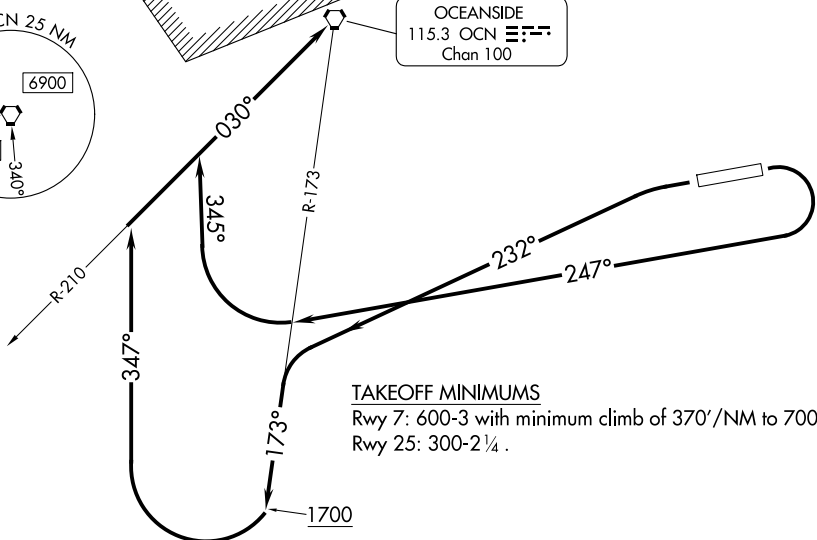
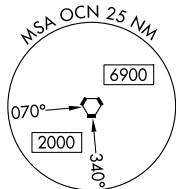
BOB MAXWELL MEML AIRFIELD (OKB)  
OCEANSIDE, CALIFORNIA

# OCEANSIDE ONE DEPARTURE (OBSTACLE)

SOCAL DEP CON  
127.3 323.0  
ASOS  
127.8  
CTAF  
122.725

R-2503A & D

OCEANSIDE  
115.3 OCN   
Chan 100



### TAKEOFF MINIMUMS

Rwy 7: 600-3 with minimum climb of 370'/NM to 700.  
Rwy 25: 300-2¼.

(CONTINUED ON FOLLOWING PAGE)

NOTE: Chart not to scale.

### DEPARTURE ROUTE DESCRIPTION

TAKEOFF RUNWAY 7: Climbing right turn on heading 247° to cross OCN R-173, then climbing right turn on heading 345° to intercept OCN R-210 to OCN VORTAC, then proceed on course. Do not exceed 200K until OCN VORTAC.

TAKEOFF RUNWAY 25: Climbing left turn on heading 232° to intercept OCN R-173 to 1700, then climbing right turn on heading 347° to intercept OCN R-210 to OCN VORTAC, then proceed on course. Do not exceed 200K until OCN VORTAC.

# OCEANSIDE ONE DEPARTURE (OBSTACLE)

(OCN1.OCN) 31OCT24

OCEANSIDE, CALIFORNIA  
BOB MAXWELL MEML AIRFIELD (OKB)

SW-3, 16 APR 2026 to 14 MAY 2026

SW-3, 16 APR 2026 to 14 MAY 2026