

LOC/DME I-MSV 109.1 Chan 28	APP CRS 155°	Rwy Ldg 5900 TDZE 1403 Apt Elev 1403
---	------------------------	---

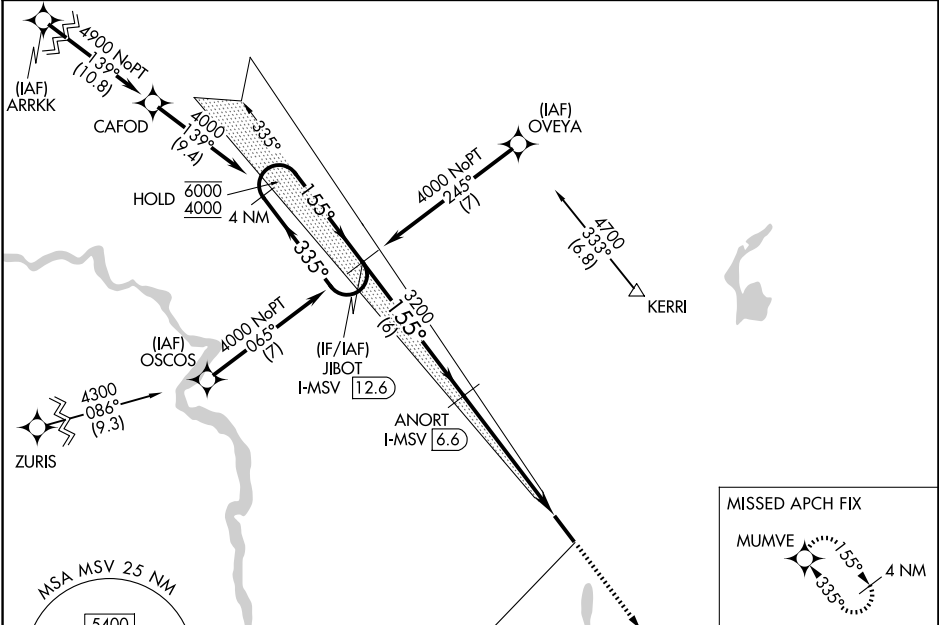
ILS or LOC RWY 15
SULLIVAN COUNTY INTL (MSV)

RNP APCH - GPS.

▼ VDP NA when using New York Stewart Intl altimeter setting. When local altimeter setting not received, use New York Stewart Intl altimeter setting; increase S-ILS 15 DA to 1858 feet and all visibilities 3/4 SM; increase all MDAs 220 feet and S-LOC 15 visibility Cat B, C and D 3/4 SM, and Circling Cat B, C and D visibilities 3/4 SM.

MISSED APPROACH: Climb to 3300 direct MUMVE and hold.

AWOS-3PT 124.725	NEW YORK APP CON 132.75 363.1	CLNC DEL 121.6	UNICOM 122.8 (CTAF) 0
----------------------------	---	--------------------------	---------------------------------



NE-2, 16 APR 2026 to 14 MAY 2026

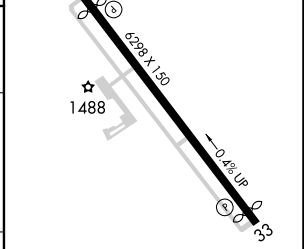
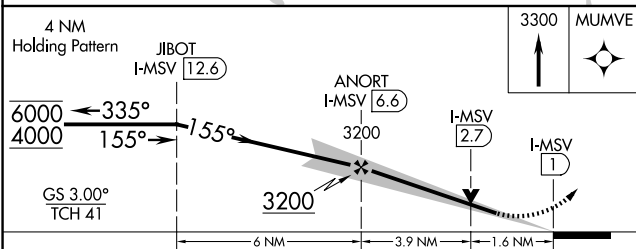
NE-2, 16 APR 2026 to 14 MAY 2026

MSA MSV 25 NM

5400

LOCALIZER 109.1
I-MSV
Chan 28

ELEV 1403 **D** TDZE 1403



CATEGORY	A	B	C	D
S-ILS 15		1653-3/4	250 (300-3/4)	
S-LOC 15	1960-1	557 (600-1)	1960-1 3/4	557 (600-1 3/4)
CIRCLING	1960-1	557 (600-1)	2020-1 3/4 617 (700-1 3/4)	2180-2 1/2 777 (800-2 1/2)

REIL Rwy 15 and 33 **0**
HIRL Rwy 15-33 **0**

FAF to MAP 5.5 NM

Knots	60	90	120	150	180
Min:Sec	5:30	3:40	2:45	2:12	1:50