

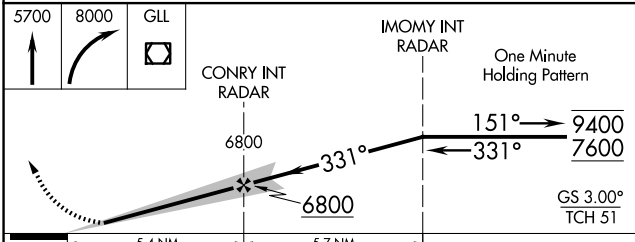
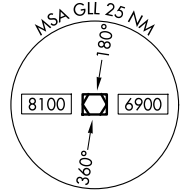
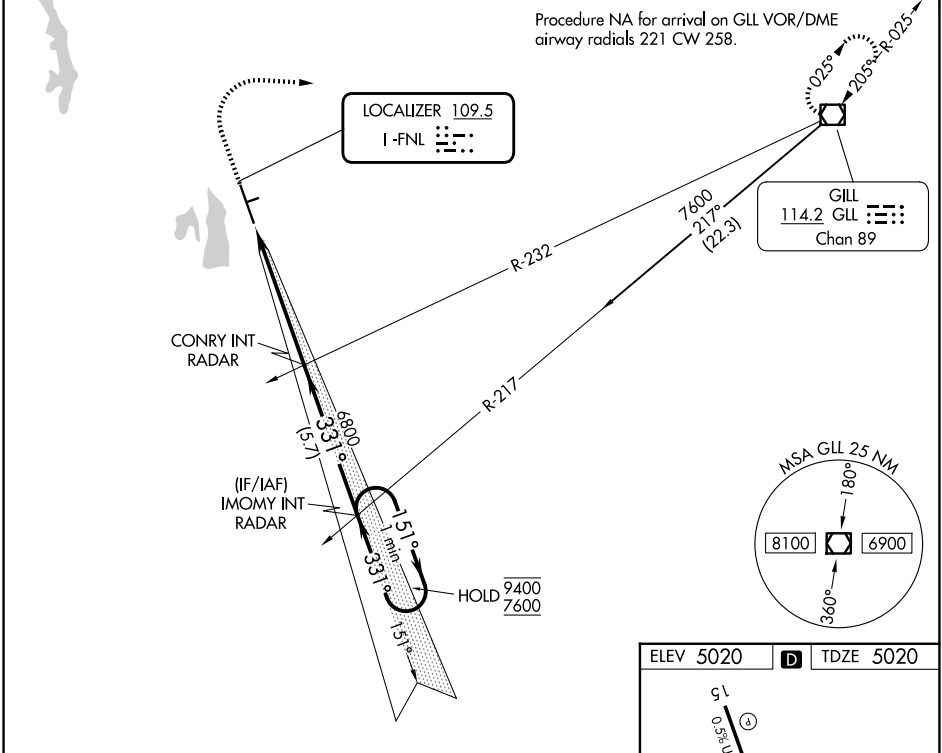
LOC I-FNL 109.5	APP CRS 331°	Rwy Ldg TDZE Apt Elev	8500 5020 5020
---------------------------	------------------------	-----------------------------	---

ILS or LOC RWY 33

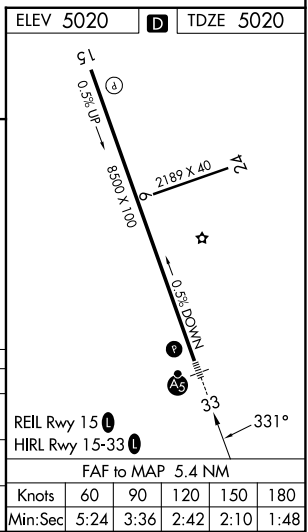
NORTHERN COLORADO RGNL (FNL)

<p>Girdling Rwy 24 NA at night. For inop ALS, increase S-LOC 33 Cat C/D visibility to 1 3/8 SM.</p>	<p>MALS R</p>	<p>MISSED APPROACH: Climb to 5700, then climbing right turn to 8000 direct GLL VOR/DME and hold.</p>	
			<p>ATIS 135.075</p>

<p>ATIS 135.075</p>	<p>DENVER APP CON 134.85 251.125</p>	<p>NOCO TOWER * 118.4 (CTAF)</p>	<p>GND CON 121.65</p>
--------------------------------	---	---	----------------------------------



5700	8000	GLL	
↑	↷		
5.4 NM		5.7 NM	
CATEGORY	A	B	C
S-ILS 33	5220-1/2		200 (200-1/2)
S-LOC 33	5500-1/2	480 (500-1/2)	5500-1 480 (500-1)
CIRCLING	5500-1 480 (500-1)	5520-1 500 (500-1)	5520-1 1/2 500 (500-1 1/2)



SW-1, 16 APR 2026 to 14 MAY 2026

SW-1, 16 APR 2026 to 14 MAY 2026