

# PIKES THREE DEPARTURE

AL-5677 (FAA)

NORTHERN COLORADO RGNL (FNL)  
FORT COLLINS/LOVELAND, COLORADO

DENVER DEP CON  
134.85 251.125  
CLNC DEL  
120.25 (when twr closed)

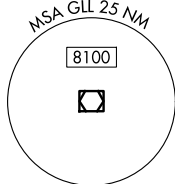
**TOP ALTITUDE:  
ASSIGNED BY ATC**

RADAR required.

### TAKEOFF MINIMUMS

Rwys 6, 24: NA - VFR Runway.

Rwys 15, 33: Standard.



MOCA 14300 for  
ALAMOSA Transition.

ALAMOSA  
113.9 ALS :...  
Chan 86

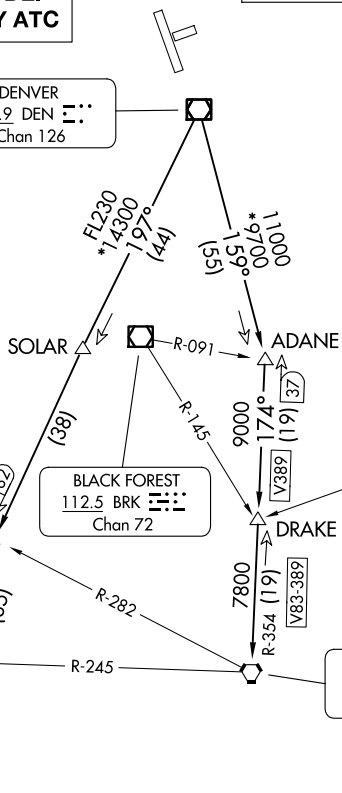
DENVER  
117.9 DEN :...  
Chan 126

GILL  
114.2 GLL :...  
Chan 89

HUGO  
112.1 HGO :...  
Chan 58

BLACK FOREST  
112.5 BRK :...  
Chan 72

PUEBLO  
116.7 PUB :...  
Chan 114



NOTE: Chart not to scale.

### DEPARTURE ROUTE DESCRIPTION

**TAKEOFF RUNWAY 15:** Climb to assigned altitude and heading between 180° CCW 350° from end of runway, thence . . .

**TAKEOFF RUNWAY 33:** Climbing right turn to assigned altitude and heading between 350° CW 150° from DER, thence . . .

. . . .RADAR vectors to assigned route. Expect filed altitude 10 minutes after departure.

**LOST COMMUNICATIONS:** If no transmissions are received within one minute after departure, maintain assigned heading until 7000, then climb to filed altitude direct to DEN VOR/DME, then on assigned route. If filed altitude is above 10000, cross DEN VOR/DME at or above 11000.

**ALAMOSA TRANSITION (PIKES3.ALS):** From over DEN VOR/DME on DEN R-197 to TEHEV, then on ALS R-002 to ALS VORTAC.

**BINKE TRANSITION (PIKES3.BINKE):** From over DEN VOR/DME on DEN R-197 to TEHEV, then on ALS R-002 to BINKE.

**PUEBLO TRANSITION (PIKES3.PUB):** From over DEN VOR/DME on DEN R-159 to ADANE, then on PUB R-354 to PUB VORTAC.

# PIKES THREE DEPARTURE

SW-1, 16 APR 2026 to 14 MAY 2026

SW-1, 16 APR 2026 to 14 MAY 2026