

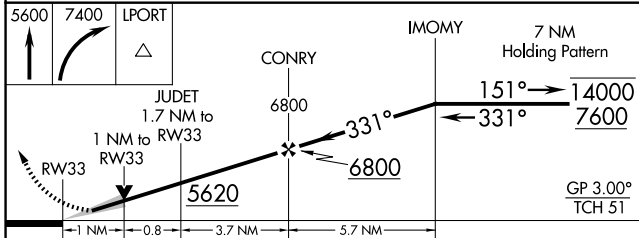
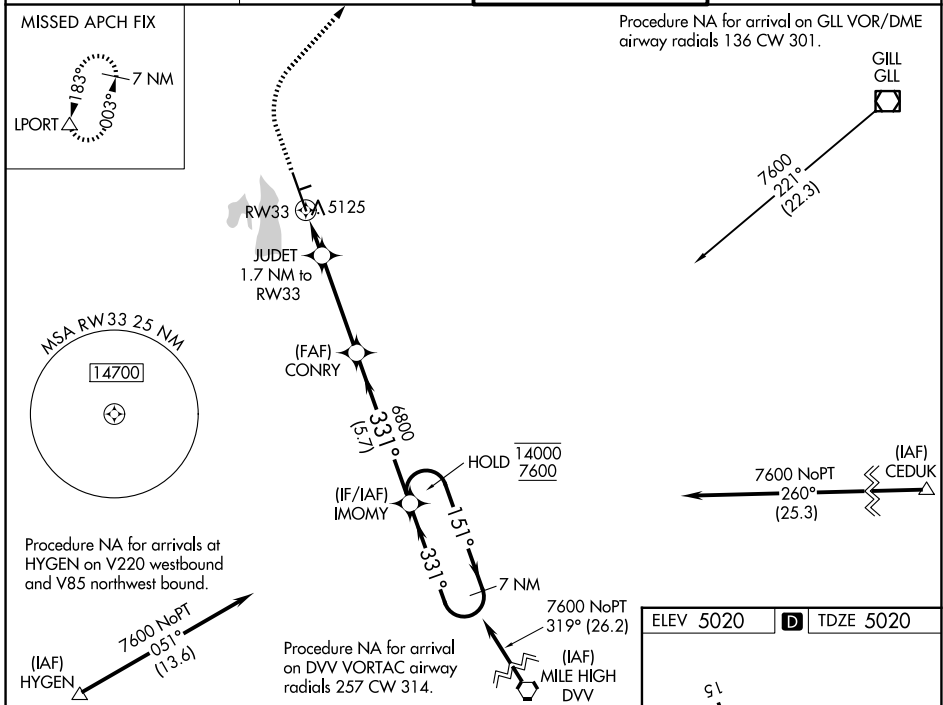
WAAS CH 97511 W33A	APP CRS 331°	Rwy Ldg 8500
		TDZE 5020
		Apt Elev 5020

RNAV (GPS) RWY 33

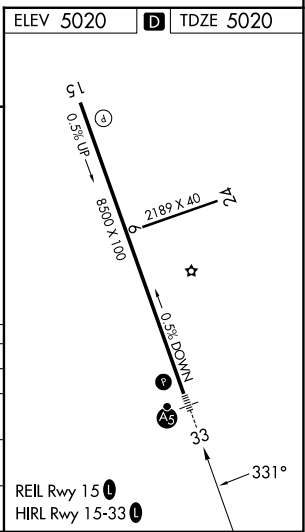
NORTHERN COLORADO RGNL (FNL)

RNP APCH-GPS.	MALSR 	MISSED APPROACH: Climb to 5600, then climbing right turn to 7400 direct LPORT and hold.
<p>⚠ Circling Rwy 24 NA at night. For uncompensated Baro-VNAV systems, LNAV/VNAV NA below -24°C or above 54°C. For inop ALS, increase LNAV/VNAV all Cats visibility to 3/8 SM and LNAV visibility Cat C/D to 1 SM.</p>		

ATIS 135,075	DENVER APP CON 134.85 251.125	NOCO TOWER* 118.4 (CTAF) 0	GND CON 121.65
------------------------	---	--------------------------------------	--------------------------



CATEGORY	A	B	C	D
LPV DA		5220-1/2	200 (200-1/2)	
LNAV/VNAV DA		5329-1/2	309 (400-1/2)	
LNAV MDA	5380-1/2	360 (400-1/2)	5380-5/8	360 (400-5/8)
CIRCLING	5480-1 460 (500-1)	5520-1 500 (500-1)	5520-1 1/2 500 (500-1 1/2)	5700-2 1/4 680 (700-2 1/4)



SW-1, 16 APR 2026 to 14 MAY 2026

SW-1, 16 APR 2026 to 14 MAY 2026