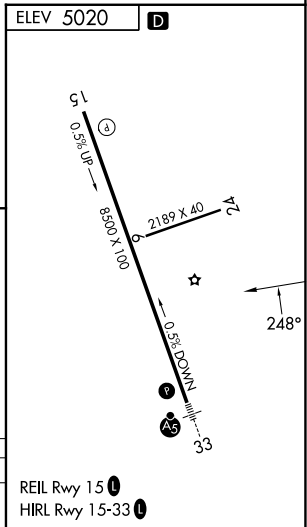
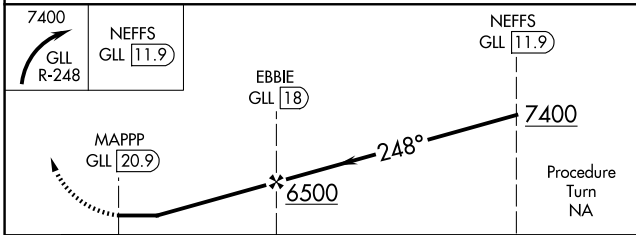
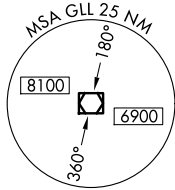
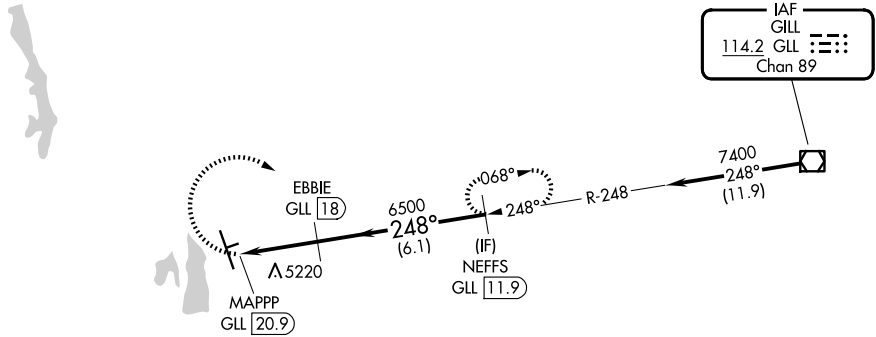


VOR/DME GLL <b>114.2</b> Chan <b>89</b>	APP CRS <b>248°</b>	Rwy Ldg TDZE Apt Elev <b>N/A</b> <b>5020</b>
---	------------------------	---

**VOR-A**  
NORTHERN COLORADO RGNL (FNL)

DME required.		MISSED APPROACH: Climbing right turn to 7400 via GLL VOR/DME R-248 to NEFFS/GLL 11.9 DME and hold.	
<p>▼ Circling Rwy 24 NA at night. When local altimeter setting not received, use Denver Intl altimeter setting and increase all MDA 160 feet and Cat C/D visibility ½ SM.</p> <p>▲</p>		ATIS <b>135,075</b>	DENVER APP CON <b>134.85 251.125</b>
		NOCO TOWER * <b>118.4 (CTAF) 0</b>	GND CON <b>121.65</b>

Procedure NA for arrivals on GLL VOR/DME airway radials 221 CW 301.



CATEGORY	A	B	C	D
CIRCLING	5480-1 460 (500-1)	5520-1 500 (500-1)	5520-1½ 500 (500-1½)	5700-2¼ 680 (700-2¼)

SW-1, 16 APR 2026 to 14 MAY 2026

SW-1, 16 APR 2026 to 14 MAY 2026