

WAAS CH 78208 W35A	APP CRS 354°	Rwy Idg TDZE Apt Elev	5001 880 901
--	------------------------	-----------------------------	---

RNAV (GPS) RWY 35

TRI-CITY (PPF)

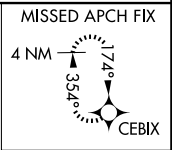
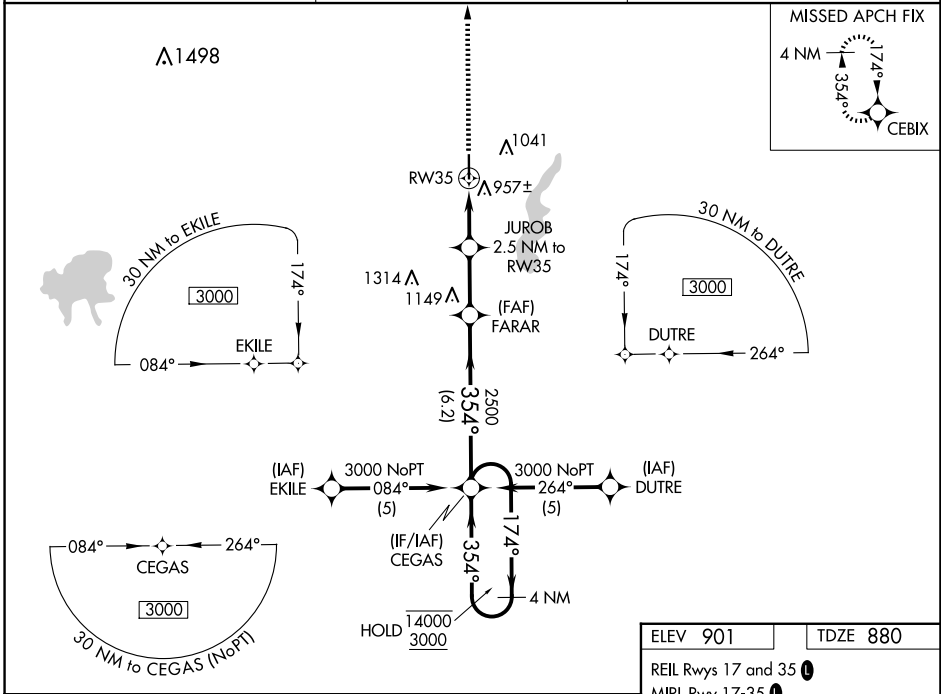
RNP APCH.
 Procedure NA at night. Rwy 35 helicopter visibility reduction below 1 SM NA. For uncompensated Baro-VNAV systems, LNAV/VNAV NA below -16°C or above 54°C.

MISSED APPROACH: Climb to 3000 direct CEBIX and hold.

ASOS
118.175

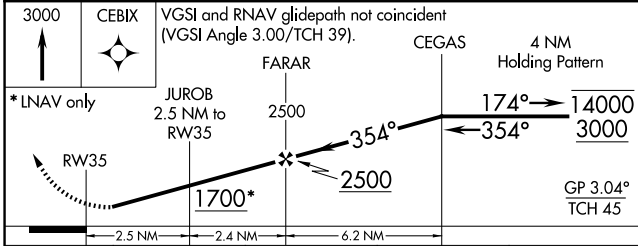
KANSAS CITY CENTER
128.6 282.325

UNICOM
123.0 (CTAF) 0

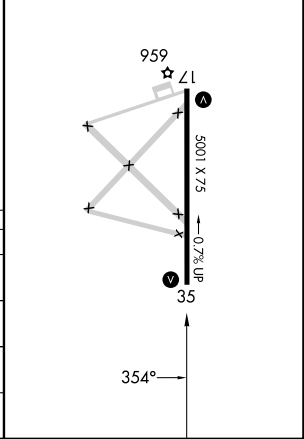


NC-2, 16 APR 2026 to 14 MAY 2026

NC-2, 16 APR 2026 to 14 MAY 2026



ELEV 901	TDZE 880
REIL Rwy 17 and 35 0	MIRL Rwy 17-35 0



CATEGORY	A	B	C	D
LPV DA	1130-1	250 (300-1)		NA
LNAV/VNAV DA	1174-1	294 (300-1)		NA
LNAV MDA	1300-1	420 (400-1)	1300-1¼ 420 (400-1¼)	NA
CIRCLING	1420-1 519 (600-1)	1440-1 539 (600-1)	1440-1½ 539 (600-1½)	NA