

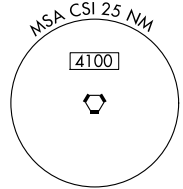
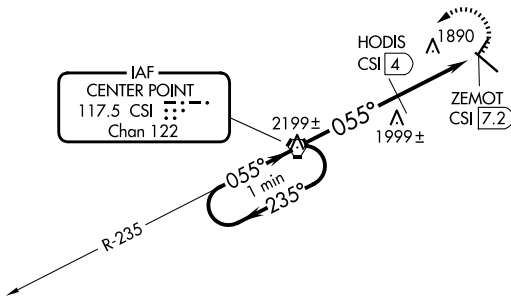
VORTAC CSI <b>117.5</b> Chan <b>122</b>	APP CRS <b>055°</b>	Rwy Ldg TDZE Apt Elev <b>1617</b>	<b>N/A</b> <b>N/A</b> <b>1617</b>
---	------------------------	---	---

# VOR-A

KERRVILLE MUNI/LOUIS SCHREINER FLD (ERV)

**▼** When local altimeter setting not received, use Fredericksburg altimeter setting and increase all MDAs 60 feet, increase Cat C visibility ¼ SM and HODIS fix minimums Cat C visibility ¼ SM.  
**▲** MISSED APPROACH: Climbing left turn to 4000 direct CSI VORTAC.

AWOS-3 <b>118.125</b>	HOUSTON CENTER <b>134.95 269.4</b>	CLNC DEL <b>134.95</b>	UNICOM <b>122.7 (CTAF) 0</b>
--------------------------	---------------------------------------	---------------------------	---------------------------------

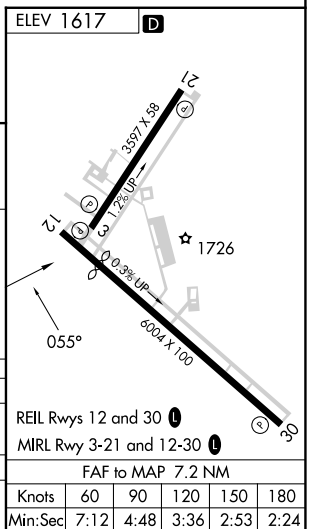


SC-3, 16 APR 2026 to 14 MAY 2026

SC-3, 16 APR 2026 to 14 MAY 2026



One Minute Holding Pattern				
4000 ← 235° / 055° →				
*2500 when using Gillespie County altimeter setting.				
CSI VORTAC				
HODIS CSI (4)				
ZEMOT CSI (7.2)				
4 NM      3.2 NM				
CATEGORY	A	B	C	D
CIRCLING	2440-1¼ 823 (900-1¼)	2440-1¼ 823 (900-1¼)	2440-2½ 823 (900-2½)	NA
HODIS FIX MINIMUMS				
CIRCLING	2320-1 703 (800-1)	2340-1 723 (800-1)	2380-2¼ 763 (800-2¼)	NA



# VOR-A

FAF to MAP 7.2 NM					
Knots	60	90	120	150	180
Min:Sec	7:12	4:48	3:36	2:53	2:24