

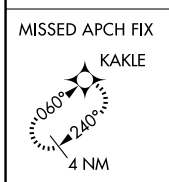
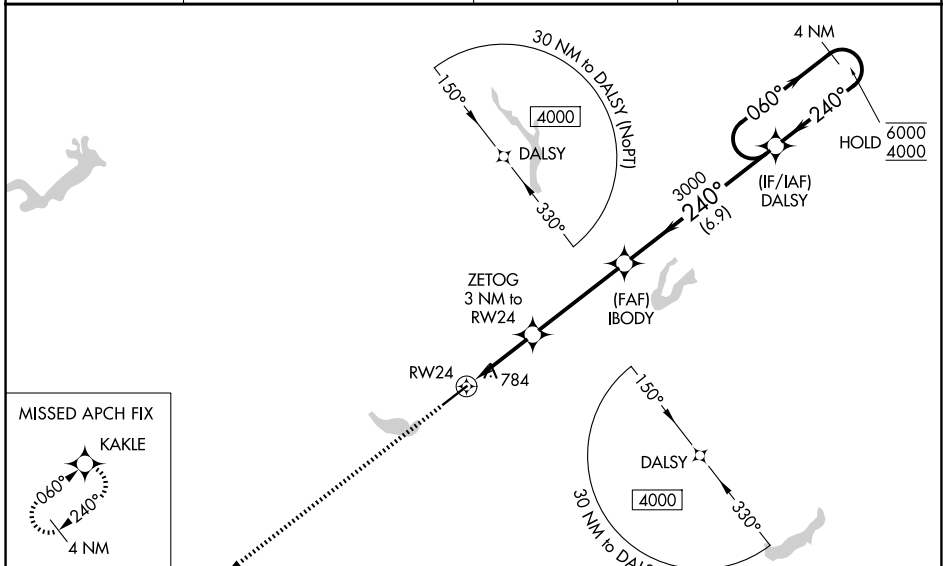
WAAS CH <b>48836</b> <b>W24A</b>	APP CRS <b>240°</b>	Rwy Ldg TDZE Apt Elev	<b>6406</b> <b>597</b> <b>616</b>
--	------------------------	-----------------------------	---

# RNAV (GPS) RWY 24

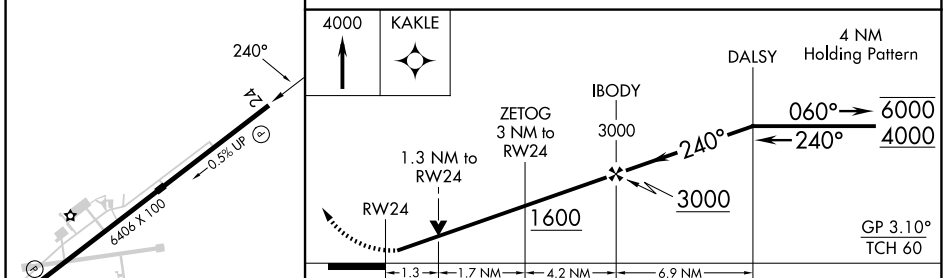
BURLINGTON/ALAMANCE RGNL (BUY)

RNP APCH - GPS.	<p><b>⚠</b> For uncompensated Baro-VNAV systems, LNAV/VNAV NA below -8°C or above 54°C. Baro-VNAV and VDP NA when using GSO altimeter setting. Helicopter visibility reduction below 3/4 SM NA. When local altimeter setting not received, use GSO altimeter setting and increase LPV DA to 1084 feet and all visibilities 1/4 SM. Increase LNAV/VNAV DA to 1157 feet and all visibilities 1/4 SM. Increase all MDAs 100 feet and LNAV visibility Cat C/D 1/4 SM, and Circling visibility Cat C 1/4 SM.</p>	<p>MISSED APPROACH: Climb to 4000 direct KAKLE and hold, continue climb-in-hold to 4000.</p>
-----------------	---	--

ASOS <b>135.325</b>	GREENSBORO APP CON <b>126.6 327.075</b>	CLNC DEL <b>120.25</b>	UNICOM <b>122.975(CTAF) 0</b>
------------------------	--	---------------------------	----------------------------------



ELEV 616	TDZE 597
----------	----------



	A	B	C	D
LPV DA	987-1 1/4		390 (400-1 1/4)	
LNAV/VNAV DA	1060-1 3/8		463 (500-1 3/8)	
LNAV MDA	1060-1	463 (500-1)	1060-1 3/8	463 (500-1 3/8)
CIRCLING	1100-1 484 (500-1)		1520-2 3/4 904 (1000-2 3/4)	1520-3 904 (1000-3)

SE-2, 16 APR 2026 to 14 MAY 2026

SE-2, 16 APR 2026 to 14 MAY 2026