

WAAS CH 50419 W18A	APP CRS 180°	Rwy Ldg TDZE Apt Elev	4171 333 333
--	------------------------	-----------------------------	---

RNAV (GPS) RWY 18

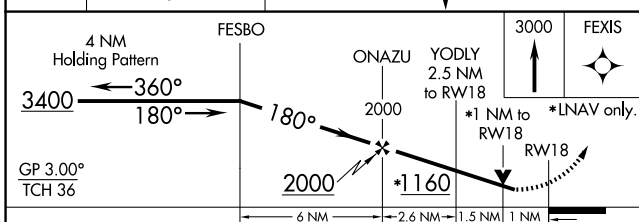
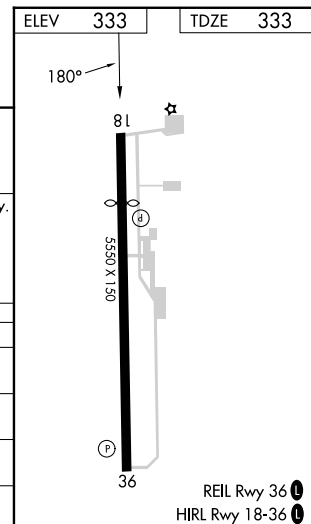
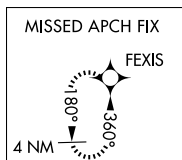
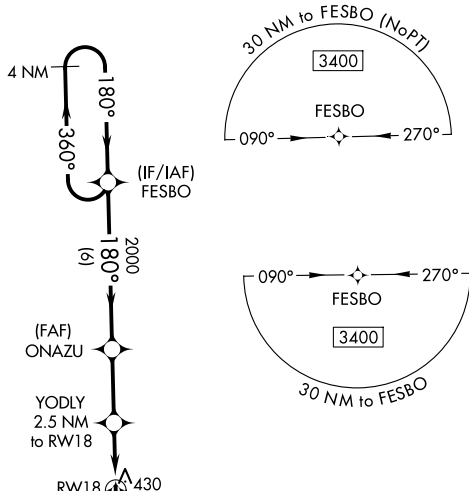
GEORGE M BRYAN (STP)

RNP APCH-GPS.

▼
▲ For uncompensated Baro-VNAV systems, LNAV/VNAV NA below -15°C or above 54°C. Baro-VNAV and VDP NA when using Golden Triangle Rgnl altimeter setting. Rwy 18 helicopter visibility reduction below 3/4 SM NA. When local altimeter setting not received, use Golden Triangle Rgnl altimeter setting and increase LPV DA to 673 feet, increase LNAV/VNAV DA to 656 feet and visibilities all Cats 1/2 SM. Increase all MDAs 40 feet and LNAV visibility Cat C/D 1/2 SM, and Circling visibility Cat C 1/2 SM.

MISSED APPROACH:
Climb to 3000 direct
FEXIS and hold.

AWOS-3PT 118.975	COLUMBUS APP CON * 135.6 323.275	CLNC DEL 126.25	UNICOM 122.7 (CTAF) 0
----------------------------	--	---------------------------	---------------------------------



CATEGORY	A	B	C	D
LPV DA		633-1	300 (300-1)	
LNAV/VNAV DA		616-1	283 (300-1)	
LNAV MDA		680-1	347 (400-1)	
CIRCLING	920-1	587 (600-1)	920-1½ 587 (600-1½)	1020-2¼ 687 (700-2¼)

SC-4, 16 APR 2026 to 14 MAY 2026

SC-4, 16 APR 2026 to 14 MAY 2026