

| | | |
|--|------------------------|---|
| WAAS CH 53604 W36A | APP CRS 360° | Rwy Ldg 5550 TDZE 326 Apt Elev 333 |
|--|------------------------|---|

RNAV (GPS) RWY 36

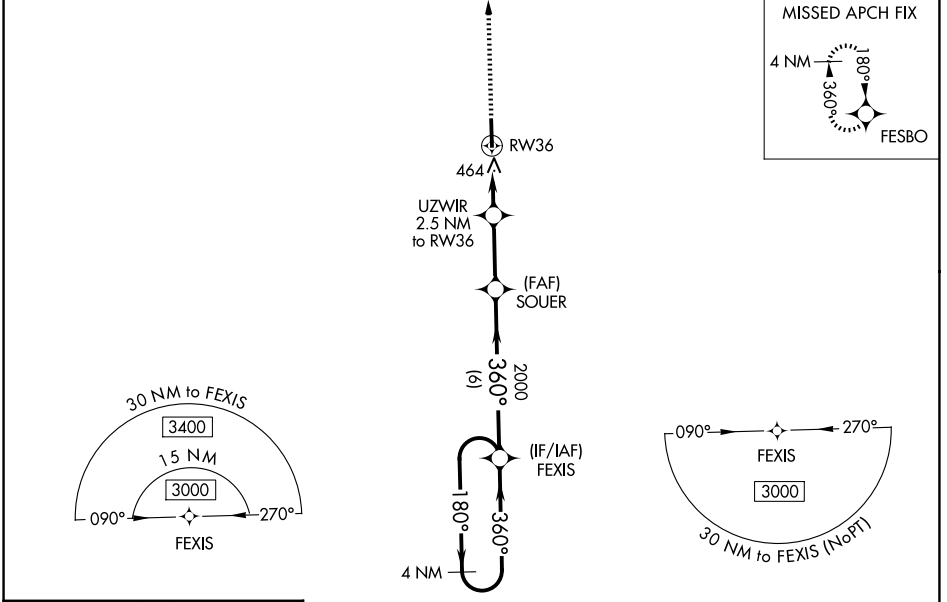
GEORGE M BRYAN (STF)

RNP APCH-GPS.

⚠ For uncompensated Baro-VNAV systems, LNAV/VNAV NA below -15°C or above 54°C .
⚠ When local altimeter setting not received, use Golden Triangle Rgnl altimeter setting and increase LPV DA to 566 feet; increase LNAV/VNAV DA to 690 feet; increase all MDAs 40 feet and LNAV visibility Cat C/D 1/8 SM, and Circling visibility Cat C 1/4 SM. Baro-VNAV and VDP NA when using Golden Triangle Rgnl altimeter setting.

MISSED APPROACH: Climb to 3400 direct FESBO and hold, continue climb-in-hold to 3400.

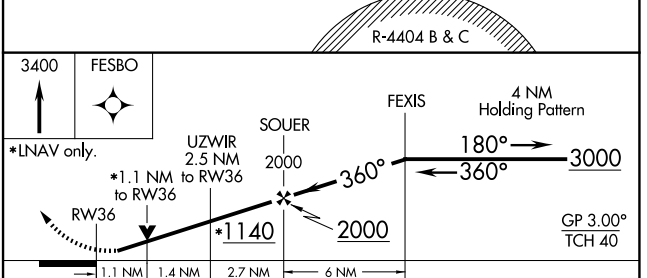
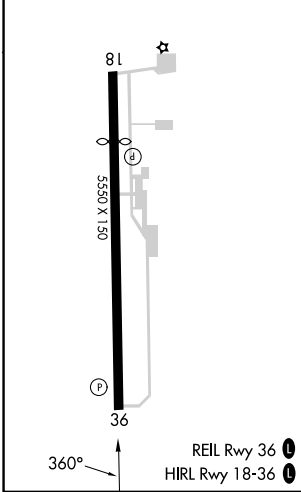
| | | | |
|----------------------------|---|---------------------------|-------------------------------|
| AWOS-3PT 118.975 | COLUMBUS APP CON* 135.6 323.275 | CLNC DEL 126.25 | UNICOM 122.7 (CTAF) |
|----------------------------|---|---------------------------|-------------------------------|



SC-4, 16 APR 2026 to 14 MAY 2026

SC-4, 16 APR 2026 to 14 MAY 2026

| | |
|----------|----------|
| ELEV 333 | TDZE 326 |
|----------|----------|



| CATEGORY | A | B | C | D |
|--------------|-------|-------------|---------------|-------------------------------|
| LPV DA | | 526-3/4 | 200 (200-3/4) | |
| LNAV/VNAV DA | | 650-1 | 324 (400-1) | |
| LNAV MDA | 720-1 | 394 (400-1) | 720-1 1/8 | 394 (400-1/8) |
| CIRCLING | 920-1 | 587 (600-1) | 920-1 1/2 | 1020-2 1/4 687 (700-2 1/4) |