


LOC I-LQG <b>111.7</b>	APP CRS <b>073°</b>	Rwy Ldg 5002	TDZE 793
		Apt Elev 793	

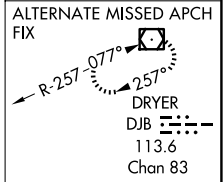
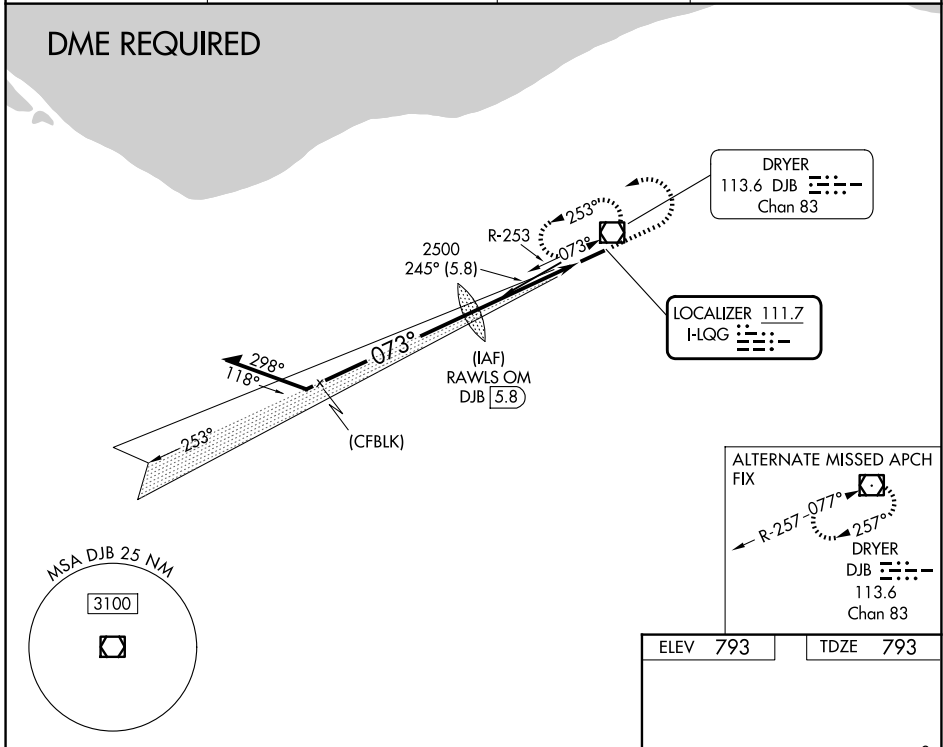
**ILS or LOC RWY 7**  
LORAIN COUNTY RGNL (LPR)

**⚠** For inoperative MALS, increase S-LOC 7 Cats C/D visibility to 1 3/8 mile.  
**⚠** VDP NA with Cleveland-Hopkins Intl altimeter setting. When local altimeter setting not received, use Cleveland-Hopkins Intl altimeter setting and increase all DA 36 feet and all MDA 40 feet.

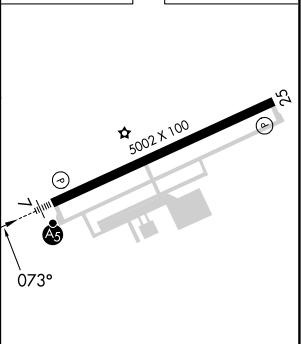
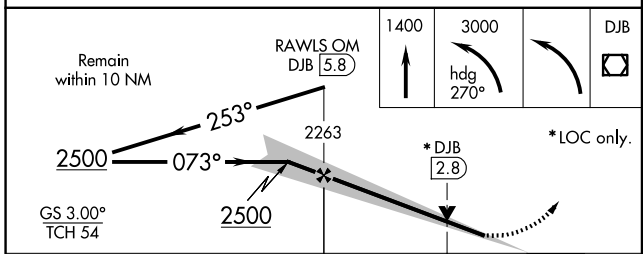
MALS 

MISSED APPROACH: Climb to 1400 then climbing left turn to 3000 on heading 270° then left turn direct DJB VOR/DME and hold.

ASOS <b>118.925</b>	CLEVELAND APP CON <b>125.35 346.325</b>	CLNC DEL <b>125.7</b>	UNICOM <b>122.7 (CTAF) 0</b>
------------------------	--	--------------------------	---------------------------------



ELEV 793	TDZE 793
----------	----------



CATEGORY	A	B	C	D
S-ILS 07		993-1/2 200 (200-1/2)		
S-LOC 07	1280-1/2 487 (500-1/2)		1280-1 487 (500-1)	
CIRCLING	1280-1 487 (500-1)	1360-1 567 (600-1)	1420-1 3/4 627 (700-1 3/4)	1420-2 627 (700-2)

REIL Rwy 25 0	HIRL Rwy 7-25 0				
FAF to MAP 4.4 NM					
Knots	60	90	120	150	180
Min:Sec	4:24	2:56	2:12	1:46	1:28

EC-2, 16 APR 2026 to 14 MAY 2026

EC-2, 16 APR 2026 to 14 MAY 2026