

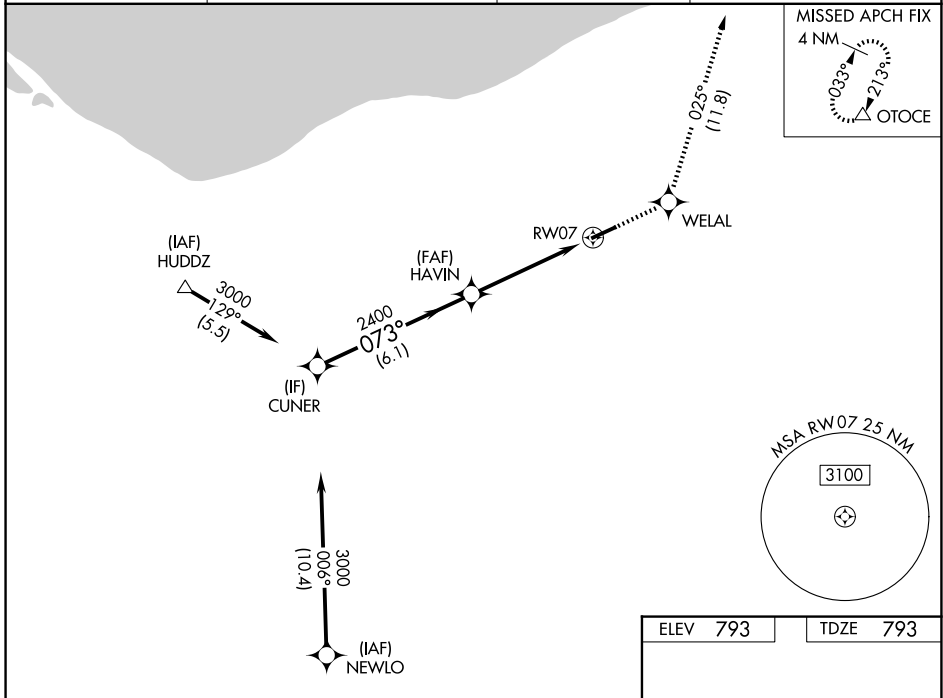
WAAS CH 99612 W07A	APP CRS 073°	Rwy Ldg TDZE 793 Apt Elev 793	5002
--	------------------------	---	-------------

RNAV (GPS) RWY 7

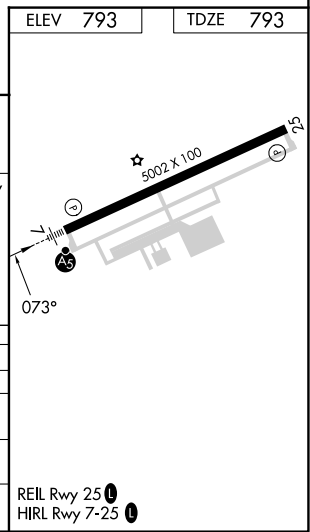
LORAIN COUNTY RGNL (L.P.R.)

RNP APCH.		MALS R	MISSED APPROACH: Climb to 3000 direct WELAL and on track 025° to OTOCE and hold.
For uncompensated Baro-VNAV systems, LNAV/VNAV NA below -16°C (4°F) or above 54°C (130°F).			

ASOS 118.925	CLEVELAND APP CON 125.35 346.325	CLNC DEL 125.7	UNICOM 122.7 (CTAF)
------------------------	--	--------------------------	-------------------------------



CUNER		HAVIN		WELAL		OTOCE	
3000		2400		3000		tr 025°	
073°		073°		073°		△	
GP 3.00°		TCH 54		*1.5 NM to RW07		*LNAV only	
6.1 NM		3.3 NM		1.5 NM			
CATEGORY	A	B	C	D			
LPV DA	993-½		200 (200-½)				
LNAV/VNAV DA	1133-¾		340 (400-¾)				
LNAV MDA	1340-½ 547 (600-½)		1340-1 5/8 547 (600-1 5/8)				
CIRCLING	1340-1 547 (600-1)	1360-1 567 (600-1)	1420-1 3/4 627 (700-1 3/4)	1420-2 627 (700-2)			



EC-2, 16 APR 2026 to 14 MAY 2026

EC-2, 16 APR 2026 to 14 MAY 2026