

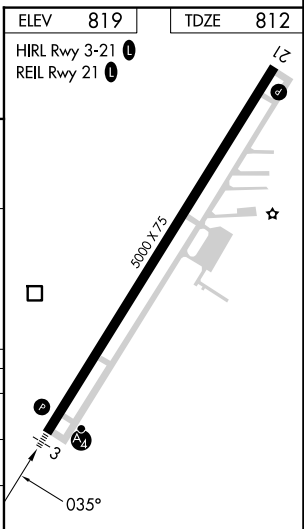
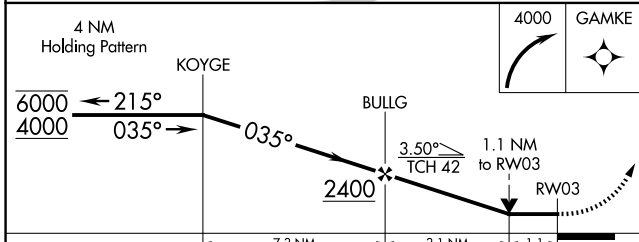
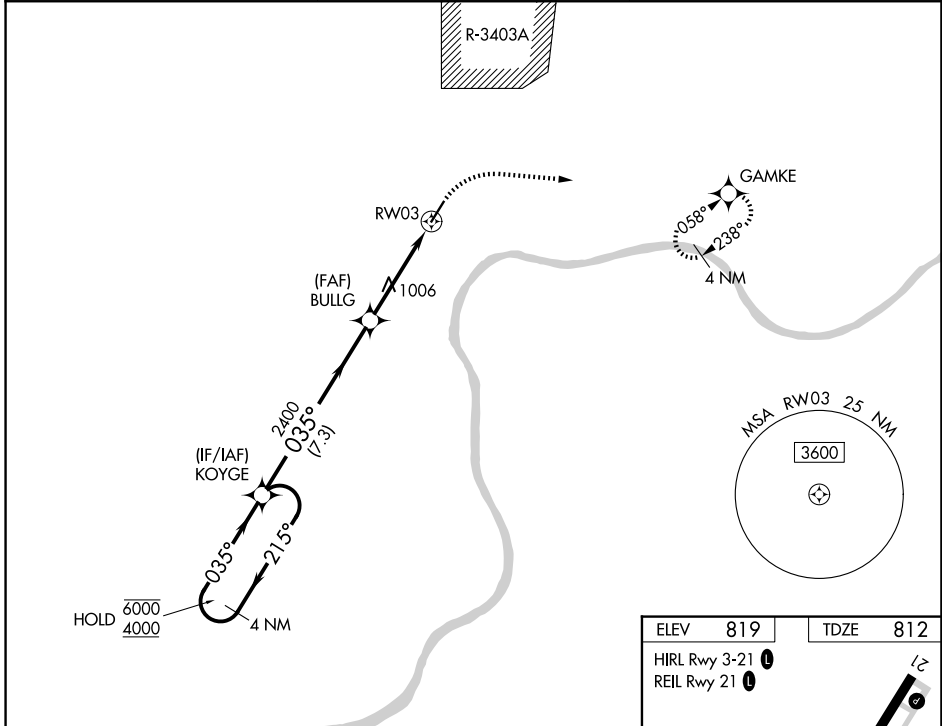
APP CRS	Rwy Ldg	5000
035°	TDZE	812
	Apt Elev	819

RNAV (GPS) Y RWY 3

MADISON RGNL (IMS)

RNP APCH - GPS.	MALSF	MISSED APPROACH: Climbing right turn to 4000 direct GAMKE and hold, continue climb-in-hold to 4000. * Missed approach requires minimum climb of 410 feet per NM to 1900.
<p>▼ Rwy 3 helicopter visibility reduction below $\frac{3}{4}$ SM NA. For inop ALS, increase *LNAV Cat C visibility and LNAV Cat visibility to $1\frac{1}{8}$ SM. Circling NA for Cat C southeast of Rwy 3-21.</p> <p>▲</p>		

AWOS-3 119.175	LOUISVILLE APP CON 132.075 327.0	UNICOM 123.0 (CTAF) 0
--------------------------	--	---------------------------------



CATEGORY	A	B	C	D
LNAV MDA*	1260- $\frac{3}{4}$	448 (500- $\frac{3}{4}$)	1260-1 448 (500-1)	NA
LNAV MDA	1420- $\frac{3}{4}$	608 (700- $\frac{3}{4}$)	1420-1 608 (700-1)	NA
CIRCLING	1420-1	601 (700-1)	1440-1 $\frac{3}{4}$ 621 (700-1 $\frac{3}{4}$)	NA

EC-2, 16 APR 2026 to 14 MAY 2026

EC-2, 16 APR 2026 to 14 MAY 2026