

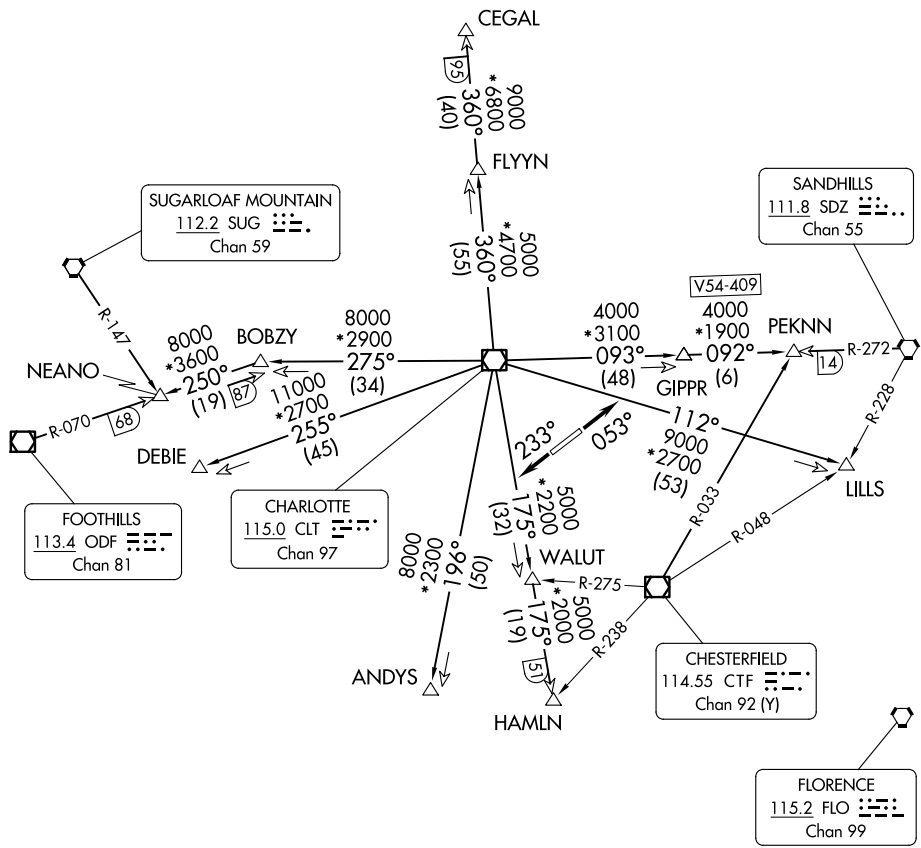
KNIGHTS THREE DEPARTURE

CHARLOTTE DEP CON
 120.05 307.8
 ASOS
 135.775
 CLNC DEL
 132.55
 UNICOM (CTAF)
 122.7

**TOP ALTITUDE:
3000**

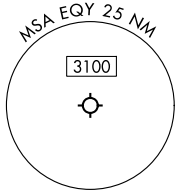
RADAR and DME required.

TAKEOFF MINIMUMS
 Rwy 5, 23: Standard.



SE-2, 16 APR 2026 to 14 MAY 2026

SE-2, 16 APR 2026 to 14 MAY 2026



NOTE: For propeller aircraft only.
 NOTE: Turboprops: Operate in a manner that will result in best forward speed and climb rate.
 NOTE: Transponder code will be issued via Charlotte clearance delivery.

(CONTINUED ON FOLLOWING PAGE)

NOTE: Chart not to scale.

KNIGHTS THREE DEPARTURE