

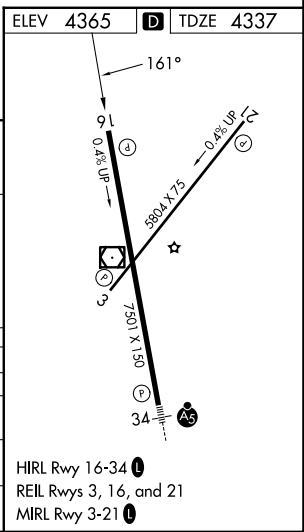
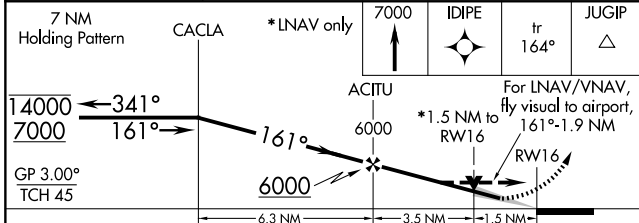
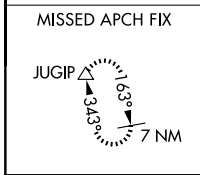
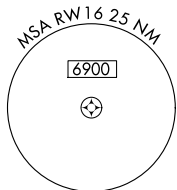
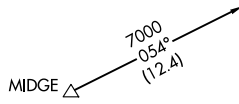
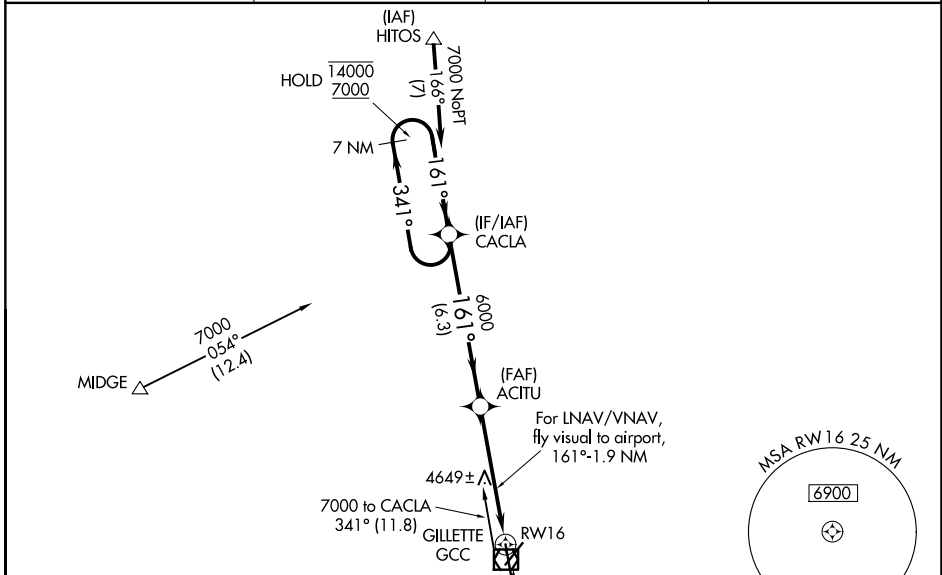
WAAS CH <b>86221</b> <b>W16A</b>	APP CRS <b>161°</b>	Rwy Ldg TDZE Apt Elev	<b>7500</b> <b>4337</b> <b>4365</b>
--	------------------------	-----------------------------	---

# RNAV (GPS) RWY 16

NORTHEAST WYOMING RGNL (GCC)

RNP APCH.	MISSED APPROACH: Climb to 7000 direct IDIPE and on track 164° to JUGIP and hold.
<p><b>∇</b> Circling Rwy 3 NA at night. For uncompensated Baro-VNAV systems, LNAV/VNAV NA below -23°C or above 54°C.</p> <p><b>⚠</b></p>	

ASOS <b>124.175</b>	DENVER CENTER <b>135.6 363.025</b>	UNICOM <b>122.95</b>	CTAF <b>118.5</b>
------------------------	---------------------------------------	-------------------------	----------------------



CATEGORY	A	B	C	D
LPV DA		4660-1	323 (300-1)	
LNAV/VNAV DA		4980-1 $\frac{7}{8}$	643 (700-1 $\frac{7}{8}$ )	
LNAV MDA	4900-1	563 (600-1)	4900-1 $\frac{5}{8}$	563 (600-1 $\frac{5}{8}$ )
CIRCLING	5040-1 675 (700-1)	5240-1 $\frac{1}{4}$ 875 (900-1 $\frac{1}{4}$ )	5400-3	1035 (1100-3)

HIRL Rwy 16-34  
REIL Rwy 3, 16, and 21  
MIRL Rwy 3-21

NW-1, 16 APR 2026 to 14 MAY 2026

NW-1, 16 APR 2026 to 14 MAY 2026