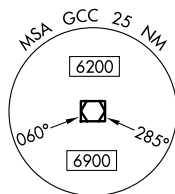
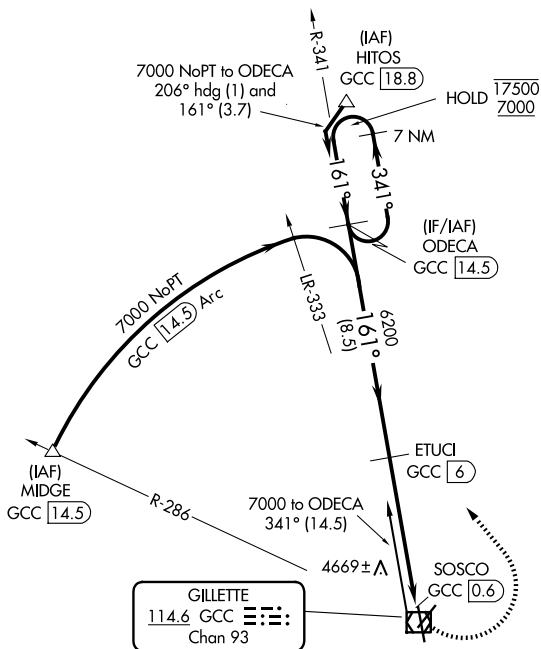


VOR/DME GCC <b>114.6</b> Chan <b>93</b>	APP CRS <b>161°</b>	Rwy Ldg TDZE <b>4337</b> Apt Elev <b>4365</b>
---	------------------------	--

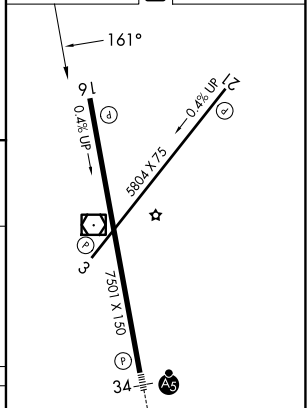
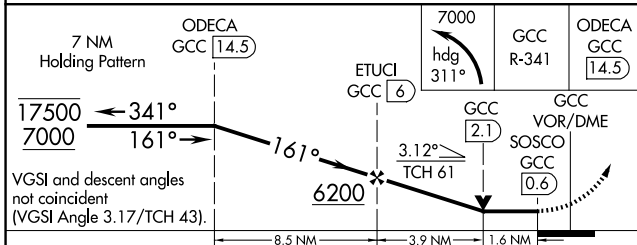
**VOR RWY 16**  
NORTHEAST WYOMING RGNL (GCC)

DME required.	MISSED APPROACH: Climbing left turn to 7000 on heading 311° and GCC R-341 to ODECA/14.5 DME and hold.
<p>▼ Circling Rwy 3 NA at night. Rwy 16 helicopter visibility reduction below ¾ SM NA.</p> <p>▲</p>	

ASOS <b>124.175</b>	DENVER CENTER <b>135.6 363.025</b>	UNICOM <b>122.95</b>	CTAF <b>118.5</b> <b>0</b>
------------------------	---------------------------------------	-------------------------	-------------------------------



ELEV 4365	D TDZE 4337
-----------	-------------



CATEGORY	A	B	C	D
S-16	4920-1	583 (600-1)	4920-1¾	583 (600-1¾)
CIRCLING	5040-1 675 (700-1)	5240-1¼ 875 (900-1¼)	5400-3	1035 (1100-3)

HIRL Rwy 16-34 **0**  
REIL Rws 3, 16, and 21  
MIRL Rwy 3-21 **0**

NW-1, 16 APR 2026 to 14 MAY 2026

NW-1, 16 APR 2026 to 14 MAY 2026