

BORRN SIX DEPARTURE (RNAV)

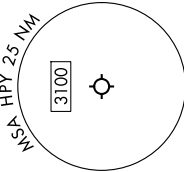
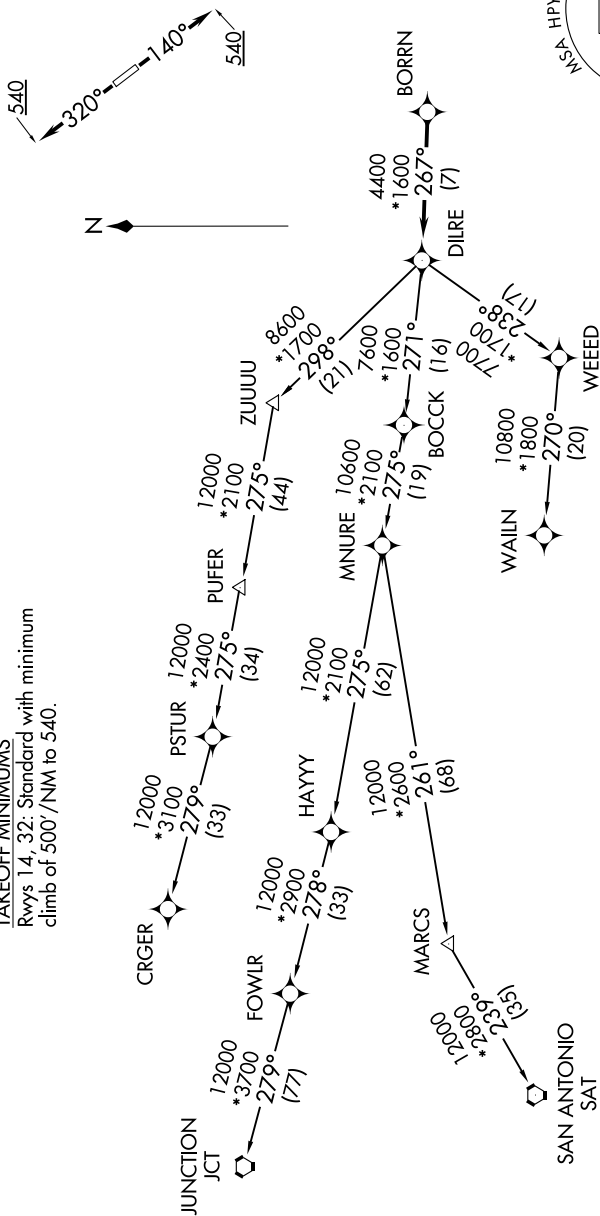
**TOP ALTITUDE:
ASSIGNED BY ATC**

RNAV 1 - DME/DME/IRU or GPS.

RADAR required.

CTAF
122.8
HOUSTON DEP CON
134.45 284.0

TAKEOFF MINIMUMS
Rwys 14, 32: Standard with minimum
climb of 500'/NM to 540.



NOTE: Chart not to scale.

NOTE: CRGR-TRANSITION ATC assigned only for aircraft departing 54T, AXH, EFD, GLS, HPY, IWS, LBX, LVJ, SGR, TME, T00, T41.

(CONTINUED ON FOLLOWING PAGE)

BORRN SIX DEPARTURE (RNAV)