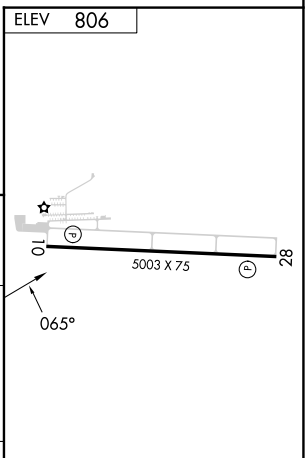
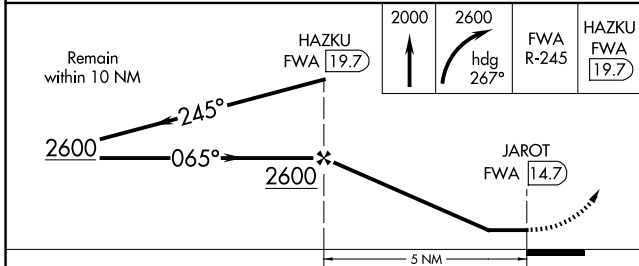
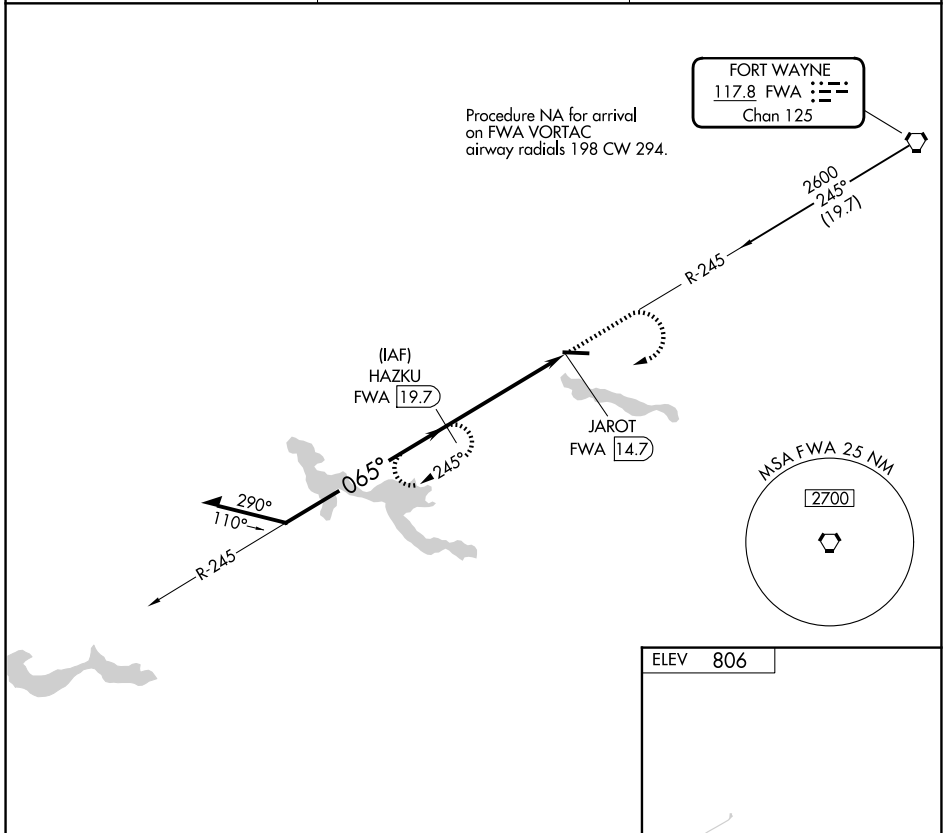


VORTAC FWA 117.8 Chan 125	APP CRS 065°	Rwy Ldg TDZE Apt Elev 806	N/A N/A 806
---	------------------------	---	--

VOR-A
HUNTINGTON MUNI (HHG)

DME required.	MISSED APPROACH: Climb to 2000 then climbing right turn to 2600 on heading 267° and on FWA VORTAC R-245 to HAZKU/19.7 DME and hold.
---------------	---

AWOS-3PT 126.575	FORT WAYNE APP CON 127.2 284.6	UNICOM 122.8 (CTAF) 0
----------------------------	--	---------------------------------



CATEGORY	A	B	C	D
CIRCLING	1300-1	494 (500-1)	1460-1¾ 654 (700-1¾)	1540-2¼ 734 (800-2¼)

MIRL Rwy 10-28
REIL Rwy 10 and 28

EC-2, 16 APR 2026 to 14 MAY 2026

EC-2, 16 APR 2026 to 14 MAY 2026