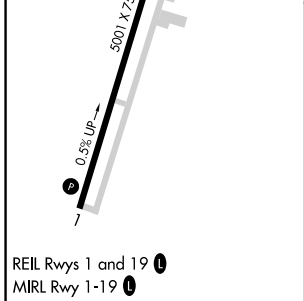
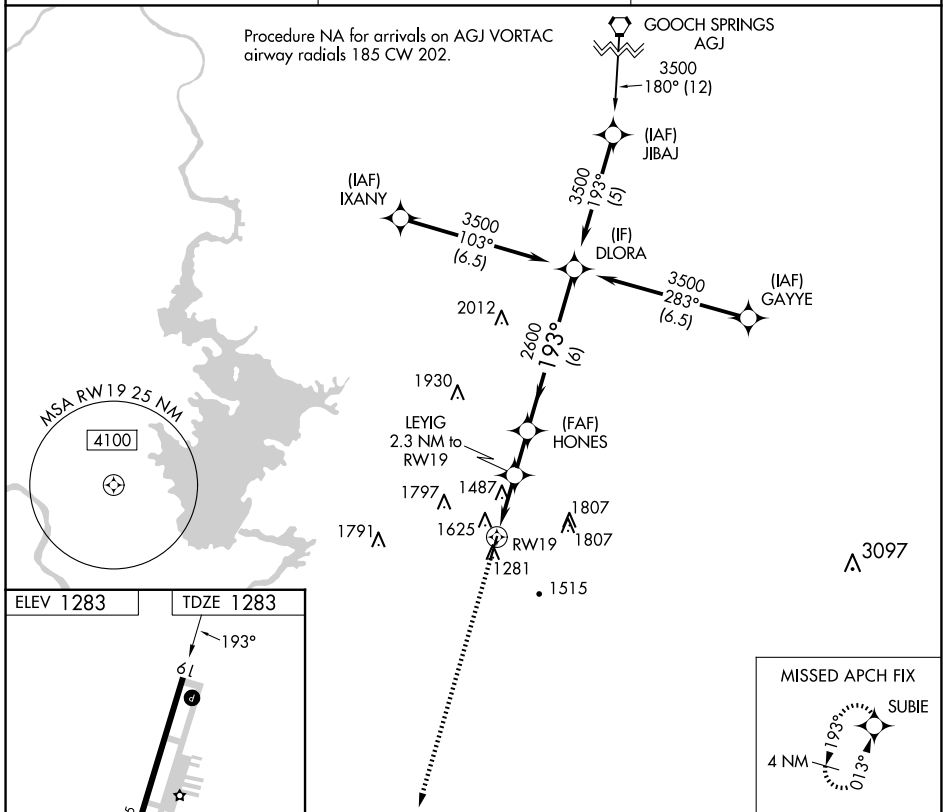


RNAV (GPS) RWY 19

BURNET MUNI/KATE CRADDOCK FLD (BMQ)

| | | |
|------------------------|-----------------------------|---|
| APP CRS 193° | Rwy Idg TDZE Apt Elev | 5001 1283 1283 |
|------------------------|-----------------------------|---|

| | | |
|------------------------|--|--|
| RNP APCH - GPS. | <p>⚠ Rwy 19 helicopter visibility reduction below 3/4 SM NA. When local altimeter setting not received, use RYW altimeter setting and increase all MDAs 60 feet and LNAV Cat C visibility 1/8 SM.</p> | <p>MISSED APPROACH: Climb to 3500 direct SUBIE and hold.</p> |
| ASOS 119.925 | | |



| | | | | | |
|----------|--------|-------------|-------------------------------|----|--|
| 3500 | SUBIE | DLORA | | | |
| | | | | | |
| 2.3 NM | 1.7 NM | 6 NM | | | |
| CATEGORY | A | B | C | D | |
| LNAV MDA | 1940-1 | 657 (700-1) | 1940-1 7/8 657 (700-1 7/8) | NA | |

BURNET, TEXAS
Amdt 1 31OCT24

30°44'N-98°14'W

RNAV (GPS) RWY 19

SC-3, 16 APR 2026 to 14 MAY 2026

SC-3, 16 APR 2026 to 14 MAY 2026